

AFFORDABLE HOUSING 4.1 & SENIOR LIVING HOUSING OPPORTUNITIES 4.2

Completion of the Drainage and Roadway improvements has increased the overall quality of life in NE Alachua neighborhoods and provide enhanced infrastructure to support the addition of Affordable Housing or a Senior Housing component to the Merrillwood Affordable Housing Complex.

2016 Completed Roadway Improvements

The completed Roadway Improvements in the NE area of the City of Alachua consisted solely of repaving existing paved streets.

The area includes part of Hipp Way, roads within Merrillwood and others in the neighborhood.

The project used \$676,441 in Neighborhood Revitalization Category CDBG funding, and was specifically selected due to the household income levels of the residents. The City provided an additional \$125,000 in leverage match funds to support the \$801,441 total cost.

Roadway Improvements were completed September 2016.



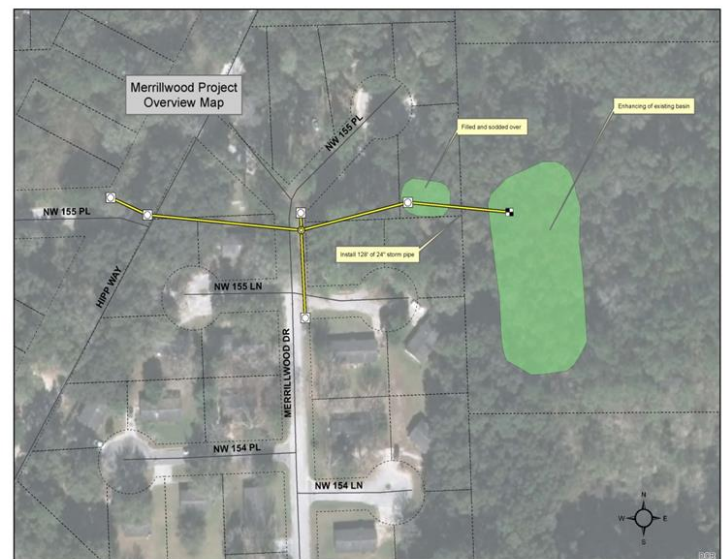
COA Cost	CDBG Grant Funds	Total Cost
\$125,000	\$676,441	\$801,441

2016 Completed Drainage Improvements

The completed 2016 Merrillwood Stormwater Improvement Project retrofitted, upgraded and enhanced the entire system in the affordable housing neighborhood. The improvements capture stormwater from all streets inside the development and provide drainage for Hipp Way that traverses the west side of Merrillwood.

The existing small interior basin, that was not functioning and had become a collector of trash, was filled and sodded to create new green space.

Drainage Improvements were completed September 2016.



COA Cost	SRWMD Grant Funds	Total Cost
\$40,936	\$40,936	\$81,872