

# PRELIMINARY PLAT

FOR:

# HIGHPOINT CROSSING

## ALACHUA COUNTY, FLORIDA

SECTION 4 & 9, TOWNSHIP 8 SOUTH, RANGE 18 EAST

SUBMITTED TO:  
CITY OF ALACHUA

### OWNER/DEVELOPER

ALACHUA A ONE, LLC.  
15260 NW 147TH DRIVE, STE 100  
ALACHUA, FL 32615  
(352) 672-8657

### ENGINEER OF RECORD

ROBERT J. WALPOLE, P.E.  
CHW  
132 N.W. 76TH DRIVE  
GAINESVILLE, FLORIDA 32607  
(352) 331-1976  
Walpole@chw-inc.com

### SURVEYOR OF RECORD

AARON H. HICKMAN, P.S.M.  
CAUSSEAU, HEWETT, & WALPOLE, INC.  
132 NW 76TH DRIVE  
GAINESVILLE, FL 32607  
(352) 331-1976

132 NW 76th Drive  
Gainesville, Florida 32607  
(882) 331-1976 / (882) 331-2476  
www.chw-inc.com

**CHW**  
Professional Consultants

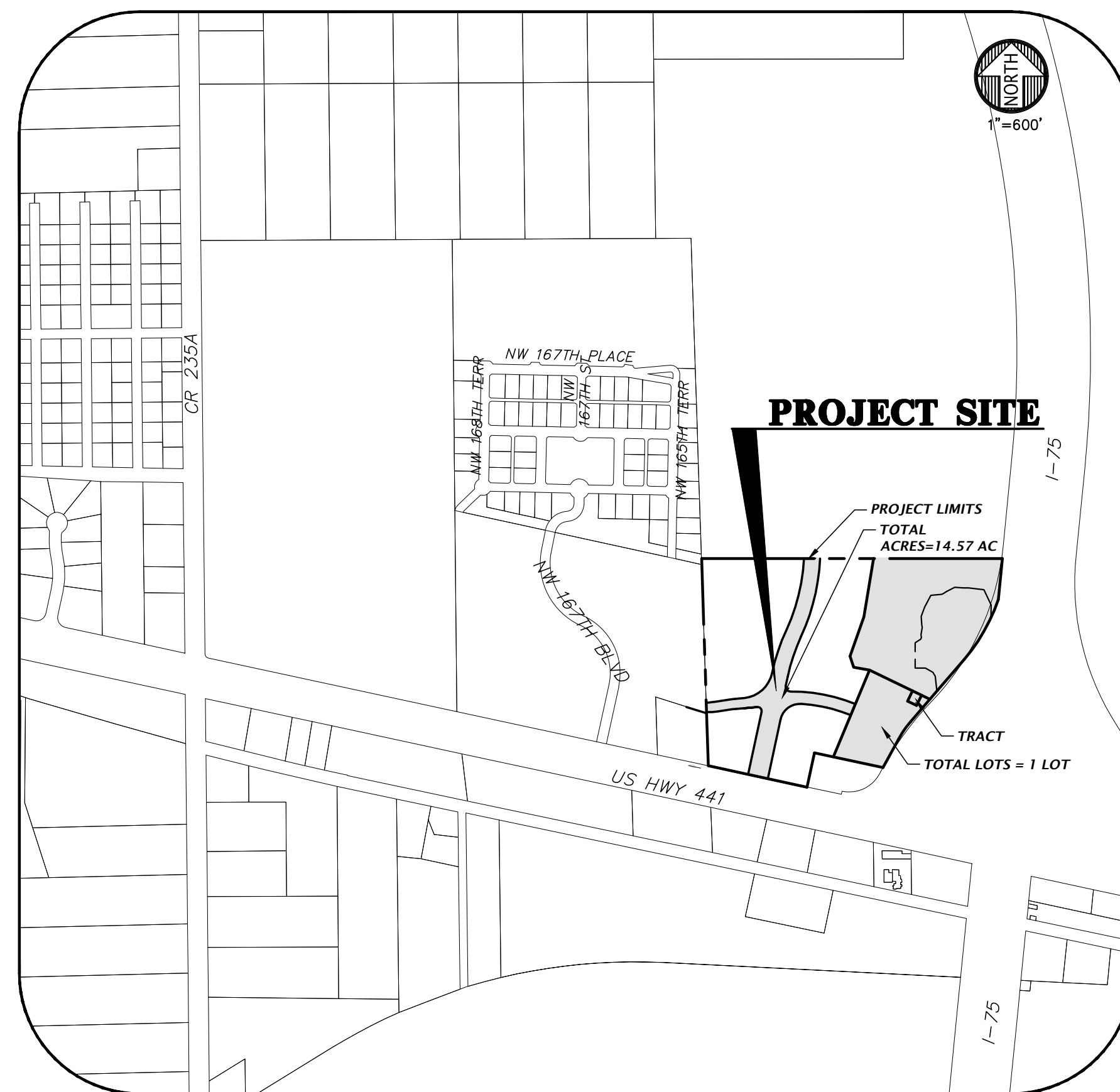
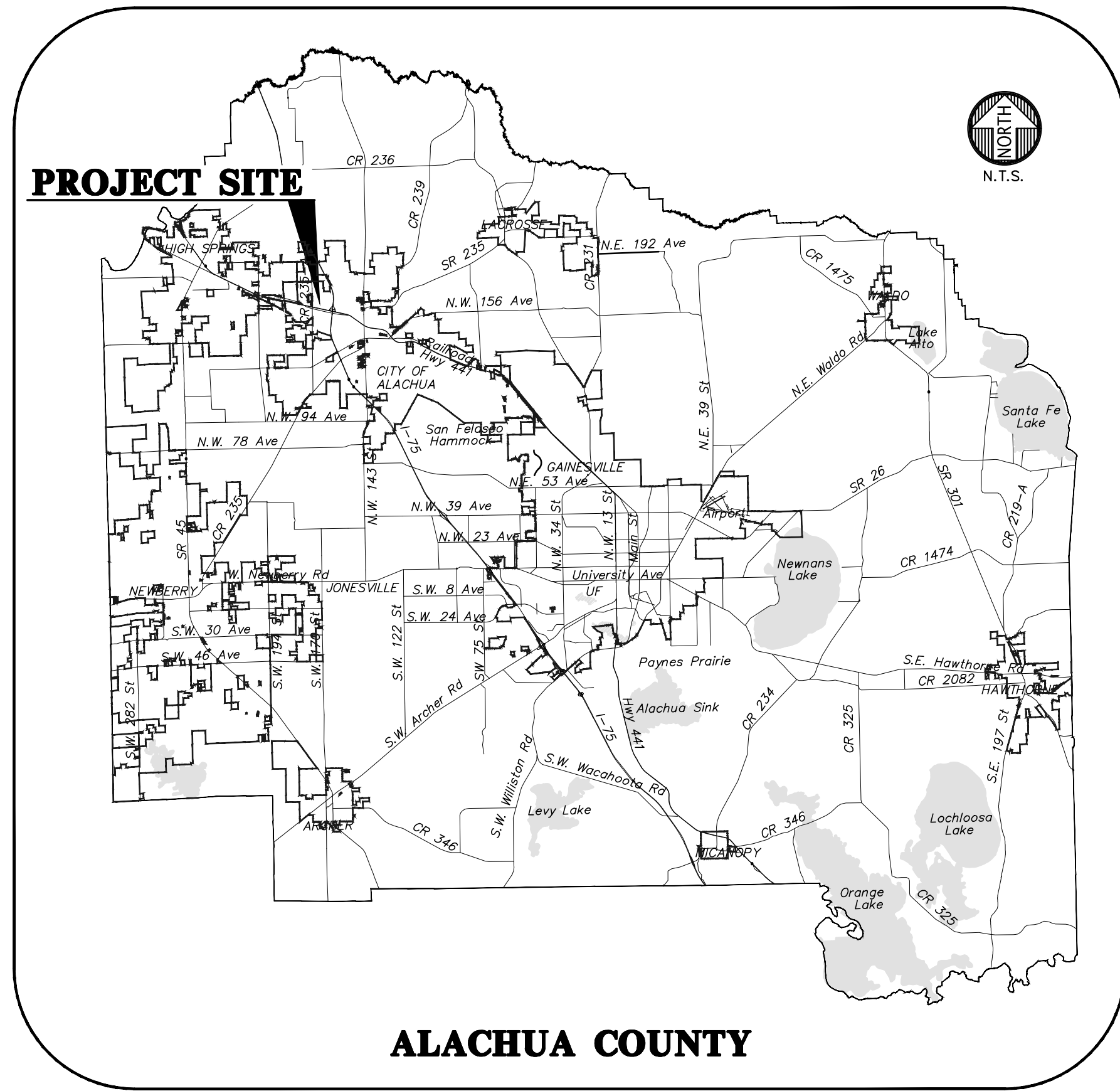
SCALE:  
1" = 600'  
THIS SHEET IS A COPY OF THE ORIGINAL DRAWING.  
PLEASE USE THIS SHEET AS A GUIDE ONLY. ADJUST SCALES ACCORDINGLY.

SHEET INDEX	
SHEET NUMBER	DESCRIPTION
CO.00	COVER SHEET AND INDEX
1-4 OF 4	BOUNDARY AND TOPOGRAPHIC SURVEY
PP-1	PRELIMINARY PLAT
PP-2	PRELIMINARY PLAT DETAILS
PP-3	PRELIMINARY PLAT DETAILS

**BEFORE YOU DIG!**  
CALL SUNSHINE STATE ONE CALL OF FLORIDA  
AT LEAST TWO FULL BUSINESS DAYS BEFORE  
DIGGING OR DISTURBING EARTH



Know what's below.  
Call before you dig.  
1-800-432-4770



A PARCEL OF LAND SITUATED IN A PORTION OF SECTION 9, TOWNSHIP 8 SOUTH, RANGE 18 EAST, ALACHUA COUNTY, FLORIDA, AND BEING MORE PARTICULARLY DESCRIBED AS FOLLOWS:

FOR POINT OF REFERENCE, COMMENCE AT THE NORTHEAST CORNER OF SECTION 9, TOWNSHIP 8 SOUTH, RANGE 18 EAST, ALACHUA COUNTY, FLORIDA, THENCE SOUTH 89°42'41" WEST, ALONG THE NORTH LINE OF SAID SECTION 9, A DISTANCE OF 148.41 FEET TO A POINT LOCATED AT THE WESTERLY RIGHT OF WAY LINE OF INTERSTATE NO. 75 (300' WIDE RIGHT OF WAY), SAID POINT LYING ON A CURVE CONCAVE WESTERLY, HAVING A RADIUS OF 579.58 FEET, AND BEING SUBTENDED BY A CHORD HAVING A BEARING AND DISTANCE OF SOUTH 89°28'11" EAST, 272.31 FEET; THENCE SOUTHERLY ALONG THE ARC OF SAID CURVE AND SAID WESTERLY RIGHT OF WAY LINE, THROUGH A CENTRAL ANGLE OF 28°17'34", AN ARC DISTANCE OF 275.52 FEET TO THE END OF SAID CURVE; THENCE SOUTH 05°40'33" WEST, ALONG SAID WESTERLY RIGHT OF WAY LINE, A DISTANCE OF 473.49 FEET TO THE POINT OF BEGINNING; THENCE CONTINUE SOUTH 05°40'33" WEST, ALONG SAID WESTERLY RIGHT OF WAY LINE, A DISTANCE OF 204.11 TO THE POINT OF CURVATURE ON A NON-TANGENT CURVE CONCAVE NORTHWESTERLY, HAVING A RADIUS OF 894.93 FEET AND BEING SUBTENDED BY A CHORD BEARING AND DISTANCE OF SOUTH 29°37'45" WEST, 343.91 FEET; THENCE ALONG THE ARC OF SAID CURVE & SAID WESTERLY RIGHT OF WAY LINE, THROUGH A CENTRAL ANGLE OF 22°03'31", AN ARC LENGTH OF 344.02 FEET TO THE END OF SAID CURVE; THENCE SOUTH 40°30'30" WEST, ALONG SAID WESTERLY RIGHT OF WAY LINE, A DISTANCE OF 407.89 FEET TO THE POINT OF CURVATURE ON A NON-TANGENT CURVE CONCAVE SOUTHEASTERLY, HAVING A RADIUS OF 507.63 FEET AND BEING SUBTENDED BY A CHORD BEARING AND DISTANCE OF SOUTH 34°41'44" WEST, 107.59 FEET; THENCE ALONG THE ARC OF SAID CURVE & SAID WESTERLY RIGHT OF WAY LINE, THROUGH A CENTRAL ANGLE OF 12°09'59", AN ARC LENGTH OF 107.79 FEET TO THE END OF SAID CURVE; THENCE SOUTH 28°38'52" WEST, ALONG SAID WESTERLY RIGHT OF WAY LINE, A DISTANCE OF 161.37 FEET TO THE SOUTHEAST CORNER OF LANDS DESCRIBED IN OFFICIAL RECORDS BOOK 1582, PAGE 1576 OF THE PUBLIC RECORDS OF ALACHUA COUNTY, FLORIDA, THE DEPARTING SAID WESTERLY RIGHT OF WAY, NORTH 77°53'37" WEST, ALONG THE SOUTHERLY LINE OF SAID LANDS, A DISTANCE OF 252.80 FEET; THENCE DEPARTING SAID SOUTHERLY LINE, NORTH 22°30'20" EAST, A DISTANCE OF 224.87 FEET TO THE BEGINNING OF A CURVE CONCAVE SOUTHERLY, HAVING A RADIUS OF 770.00, AND BEING SUBTENDED BY A CHORD HAVING A BEARING AND DISTANCE OF NORTH 77°00'00" WEST, 251.97 FEET; THENCE WESTERLY ALONG THE ARC OF SAID CURVE, THROUGH A CENTRAL ANGLE OF 18°50'01", AN ARC DISTANCE OF 253.10 FEET TO THE POINT OF COMPOUND CURVATURE OF A CURVE CONCAVE SOUTHEASTERLY, HAVING A RADIUS OF 100.00 FEET, AND BEING SUBTENDED BY A CHORD HAVING A BEARING AND DISTANCE OF SOUTH 52°47'58" WEST, 130.37 FEET; THENCE SOUTHWESTERLY ALONG THE ARC OF SAID CURVE, THROUGH A CENTRAL ANGLE OF 81°21'53", AN ARC DISTANCE OF 142.01 FEET TO THE POINT OF TANGENCY; THENCE SOUTH 12°07'01" WEST, A DISTANCE OF 300.32 FEET TO THE NORTHERLY RIGHT OF WAY OF US HIGHWAY NO. 441; THENCE NORTH 77°41'45" WEST, ALONG SAID NORTHERLY RIGHT OF WAY LINE, A DISTANCE OF 100.00 FEET; THENCE DEPARTING SAID NORTHERLY RIGHT OF WAY LINE, NORTH 12°07'01" EAST, A DISTANCE OF 318.08 FEET TO THE BEGINNING OF A CURVE CONCAVE SOUTHWESTERLY, HAVING A RADIUS OF 20.00 FEET, AND BEING SUBTENDED BY A CHORD BEARING AND DISTANCE OF NORTH 41°21'31" WEST, 32.14 FEET; THENCE NORTHWESTERLY ALONG THE ARC OF SAID CURVE THROUGH A CENTRAL ANGLE OF 106°51'04", AN ARC DISTANCE OF 37.93 FEET TO THE POINT OF TANGENCY; THENCE SOUTH 85°09'57" WEST, A DISTANCE OF 67.40 FEET TO THE BEGINNING OF A CURVE

CONCAVE NORTHERLY, HAVING A RADIUS OF 1025.00 FEET, AND BEING SUBTENDED BY A CHORD HAVING A BEARING AND DISTANCE OF SOUTH 89°09'59" WEST, 185.84 FEET; THENCE WESTERLY ALONG THE ARC OF SAID CURVE, THROUGH A CENTRAL ANGLE OF 07°28'48", AN ARC DISTANCE OF 185.99 FEET TO THE EAST LINE OF LANDS DESCRIBED IN OFFICIAL RECORDS BOOK 4076, PAGE 2345, OF SAID PUBLIC RECORDS, THENCE NORTH 01°51'21" WEST, ALONG SAID EAST LINE, A DISTANCE OF 50.91 FEET; THENCE DEPARTING SAID EAST LINE, WITH A CURVE CONCAVE NORTHERLY, HAVING A RADIUS OF 376.00 FEET, AND BEING SUBTENDED BY A CHORD HAVING A BEARING AND DISTANCE OF NORTH 89°02'21" EAST, 191.84 FEET; THENCE EASTERLY ALONG THE ARC OF SAID CURVE THROUGH A CENTRAL ANGLE OF 1°11'30", AN ARC DISTANCE OF 192.15 FEET TO THE POINT OF COMPOUND CURVATURE OF A CURVE CONCAVE NORTHWESTERLY, HAVING A RADIUS OF 157.00 FEET, AND BEING SUBTENDED BY A CHORD HAVING A BEARING AND DISTANCE OF NORTH 47°45'44" EAST, 182.93 FEET; THENCE NORTHEASTERLY ALONG THE ARC OF SAID CURVE THROUGH A CENTRAL ANGLE OF 71°15'44", AN ARC DISTANCE OF 195.27 FEET TO THE POINT OF REVERSE CURVATURE OF A CURVE CONCAVE EASTERLY, HAVING A RADIUS OF 1040.00 FEET, AND BEING SUBTENDED BY A CHORD HAVING A BEARING AND DISTANCE OF SOUTH 12°35'50" WEST, 210.88 FEET; THENCE SOUTHERLY ALONG THE ARC OF SAID CURVE THROUGH A CENTRAL ANGLE OF 12°39'41", AN ARC DISTANCE OF 211.31 FEET TO THE POINT OF TANGENCY; THENCE SOUTH 12°07'01" WEST, A DISTANCE OF 46.81 FEET TO THE BEGINNING OF A CURVE CONCAVE NORTHEASTERLY, HAVING A RADIUS OF 24.00 FEET, AND BEING SUBTENDED BY A CHORD HAVING A BEARING AND DISTANCE OF SOUTH 39°11'30" EAST, 37.47 FEET; THENCE SOUTHEASTERLY ALONG THE ARC OF SAID CURVE THROUGH A CENTRAL ANGLE OF 102°37'15", AN ARC DISTANCE OF 42.99 FEET TO THE POINT OF REVERSE CURVATURE OF A CURVE CONCAVE SOUTHERLY, HAVING A RADIUS OF 830.00 FEET, AND BEING SUBTENDED BY A CHORD HAVING A BEARING AND DISTANCE OF SOUTH 17°00'01" EAST, 328.68 FEET; THENCE EASTERLY ALONG THE ARC OF SAID CURVE THROUGH A CENTRAL ANGLE OF 22°50'24", AN ARC DISTANCE OF 330.87 FEET TO THE END OF SAID CURVE; THENCE NORTH 22°36'20" EAST, A DISTANCE OF 183.17 FEET; THENCE NORTH 80°21'22" WEST, A DISTANCE OF 80.28 FEET; THENCE NORTH 18°11'20" WEST, A DISTANCE OF 57.81 FEET; THENCE NORTH 19°15'22" EAST, A DISTANCE OF 209.62 FEET; THENCE NORTH 09°31'10" EAST, A DISTANCE OF 290.35 FEET; THENCE NORTH 90°00'00" EAST, A DISTANCE OF 446.55 FEET TO THE POINT OF BEGINNING.

CONTAINING 14.57 ACRES, MORE OR LESS

A  
B  
C  
D

CONSTRUCTION PERMITS

DATE: 04/07/2017  
CITY OF ALACHUA  
RE-SUBMITTAL TO CITY OF ALACHUA  
RE-SUBMITTAL TO CITY OF ALACHUA  
P2B SUBMITTAL TO CITY OF ALACHUA

CLIENT: ALACHUA A ONE, LLC  
PROJECT: HIGHPOINT CROSSING  
SHEET TITLE: COVER SHEET AND INDEX  
SHEET NUMBER: 16-0638

DESIGNED BY: ROBERT J. WALPOLE  
PROJECT ENGINEER: ROBERT J. WALPOLE  
CHECKED BY: ROBERT J. WALPOLE  
DATE: 04/07/2017  
FL PE No. 58206  
SHEET NO. CO.00

**SURVEYOR'S NOTES:**

- NO UNDERGROUND INSTALLATION OF UTILITIES OR IMPROVEMENTS HAVE BEEN LOCATED EXCEPT AS SHOWN.
- THE SURVEYOR HAS NO KNOWLEDGE OF UNDERGROUND FOUNDATIONS WHICH MAY ENCRoACH.
- INSTRUMENTS OF RECORD REFLECTING EASEMENTS, RIGHTS-OF-WAY, AND OR OWNERSHIP WERE NOT FURNISHED TO THE SURVEYOR EXCEPT AS SHOWN. SEARCH OF THE PUBLIC RECORDS HAS NOT BEEN DONE BY THE SURVEYOR.
- FENCES, SYMBOLS, MONUMENTATION AND UTILITIES SHOWN HEREON MAY BE EXAGGERATED FOR PICTORIAL PURPOSES ONLY AND MAY NOT BE SHOWN TO SCALE.
- ELEVATIONS SHOWN HEREON ARE NORTH AMERICAN DATUM OF 1988 (NAD88) PROJECTED FROM RECOVERED BENCHMARK C 51-4787 CONCRETE MONUMENT AND BRASS CAP STAMPED C 51 1934 HAVING A PUBLISHED ELEVATION OF 75.14 FEET.
- THIS MAP CONSISTS OF THREE SHEETS TOTAL. EACH SHEET IS NOT COMPLETE WITHOUT THE OTHERS.
- LOCATIONS OF UNDERGROUND UTILITIES SHOWN HEREON ARE APPROXIMATE AND ARE MAPPED BASED ON FIELD LOCATED PAINT MARKINGS BY OTHERS, AND VISIBLE SURFACE EVIDENCE THEREOF, IN CONJUNCTION WITH UTILITY MAPS FURNISHED FROM THE CITY OF ALACHUA AND GAINESVILLE REGIONAL UTILITIES. NO EXCAVATION OF UNDERGROUND UTILITIES WAS PERFORMED BY THIS SURVEYOR.
- THIS SURVEY CONSIST OF 4 SHEETS TOTAL. SEE SHEETS 2-4 FOR DETAILED TOPOGRAPHIC INFORMATION.
- WETLAND FLAGS SHOWN HEREON WERE ESTABLISHED BY ECOSYSTEMS RESEARCH CORPORATION.

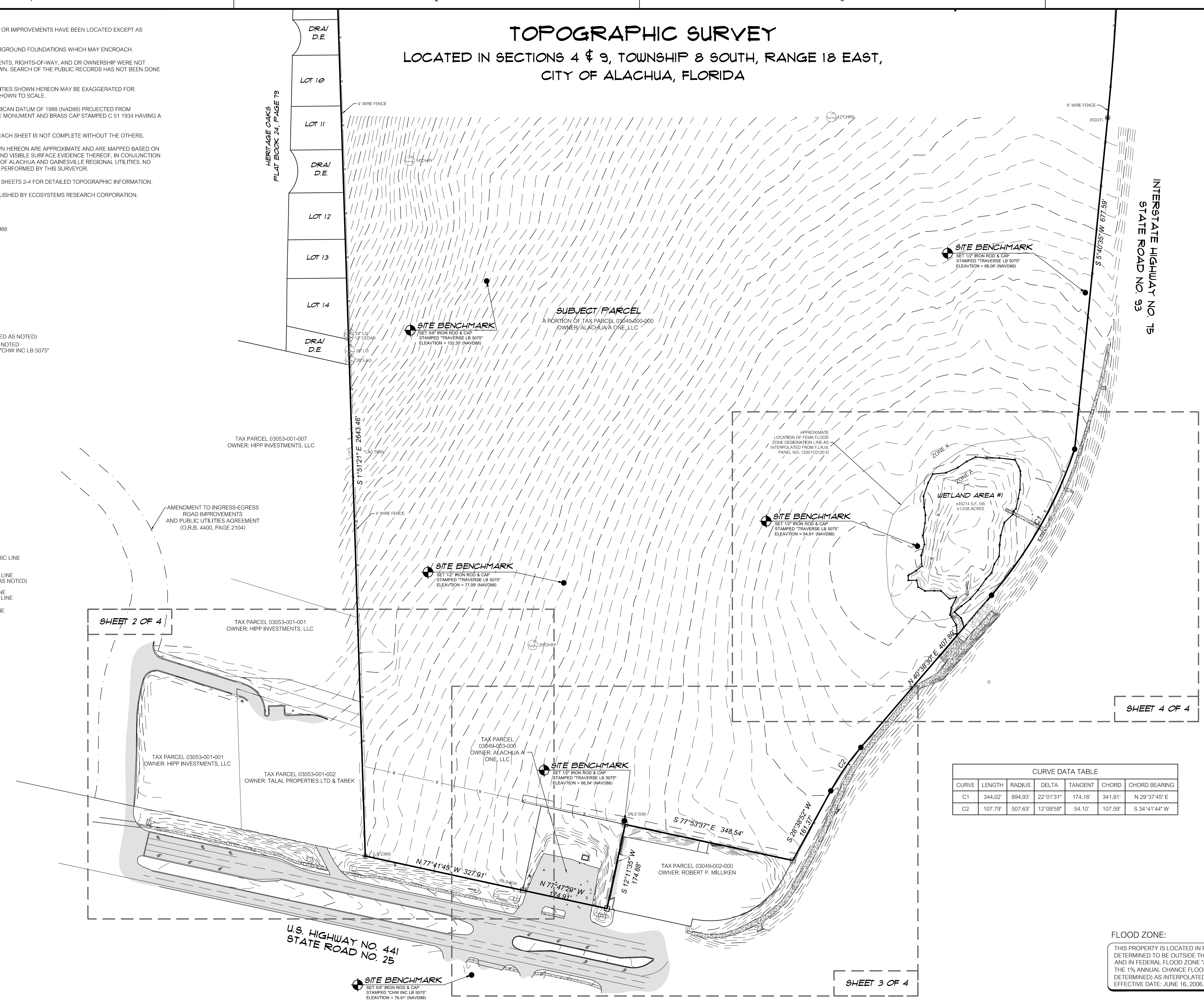
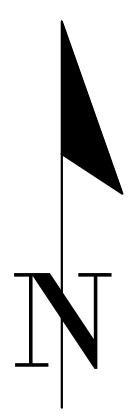
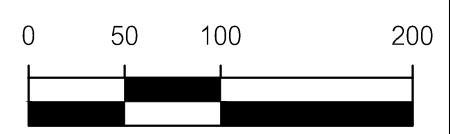
**LEGEND:**

- NAVD88 = NORTH AMERICAN VERTICAL DATUM OF 1988  
 NFE = NORTH RIM ELEVATION  
 INV = INVERT ELEVATION  
 PVC = POLYVINYL CHLORIDE  
 S.F. = SQUARE FEET  
 RCP = REINFORCED CONCRETE PIPE  
 O.R.B. = OFFICIAL RECORDS BOOK  
 LO = LIVE OAK  
 LAO = LAUREL OAK  
 CHRY = CHERRY TREE  
 HACK = HACKBERRY  
 D.E. = DRAINAGE EASEMENT  
 DRA = DRAINAGE RETENTION AREA (TYP) = TYPICAL  
 CMP = CORRUGATED METAL PIPE  
 WL, XY, ▲ = WETLAND FLAG  
 □ = FOUND 4"x4" CONCRETE MONUMENT (MARKED AS NOTED)  
 ○ = FOUND 5/8" STEEL REBAR & CAP MARKED AS NOTED  
 ● = FOUND 5/8" STEEL REBAR AND CAP MARKED "CHW INC LB 5075"
- = BENCHMARK  
 ○ = CLEANOUT  
 ○ = CONCRETE POWER POLE  
 ○ = CABLE TELEVISION BOX  
 ○ = ELECTRIC BOX  
 ○ = ELECTRIC METER  
 ○ = FIRE HYDRANT  
 ○ = FIBER OPTIC BOX  
 ○ = GUY ANCHOR  
 ○ = SIGN  
 ○ = TREE (SIZE AND TYPE AS NOTED)  
 ○ = SANITARY SEWER MANHOLE  
 ○ = STORM SEWER MANHOLE  
 ○ = TELEPHONE PEDESTAL  
 ○ = TRANSFORMER  
 ○ = TRAFFIC SIGNAL BOX  
 ○ = METAL LIGHT POLE  
 ○ = WOOD LIGHT POLE  
 ○ = WOODEN POWER POLE  
 ○ = WATER VALVE  
 ○ = WATER METER  
 ○ = BOLLARD  
 ○ = MONITORING WELL  
 ○ = ILLUMINATION BOLLARD
- E — = UNDERGROUND ELECTRIC LINE  
 — Ohw — = OVERHEAD WIRE  
 — SS — = SANITARY SEWER LINE  
 — W — = UNDERGROUND WATER LINE  
 — X — = FENCE (SIZE AND TYPE AS NOTED)  
 — ST — = STORM SEWER LINE  
 — G — = UNDERGROUND GAS LINE  
 — (W) — = UNDERGROUND WATER LINE (PER UTILITY MAPS)  
 — (G) — = UNDERGROUND GAS LINE (PER UTILITY MAPS)  
 — — = HAND RAIL  
 — — = CONTOUR LINE
- — = END OF FEATURE NOT DETERMINED  
 □ = ASPHALT SURFACE  
 □ = CONCRETE SURFACE

# TOPOGRAPHIC SURVEY

## LOCATED IN SECTIONS 4 & 9, TOWNSHIP 8 SOUTH, RANGE 18 EAST, CITY OF ALACHUA, FLORIDA

**GRAPHIC SCALE**



CURVE	LENGTH	RADIUS	DELTA	TANGENT	CHORD	CHORD BEARING
C1	344.02'	894.93'	22°01'31"	174.16'	341.91'	N 29°37'45" E
C2	107.79'	507.63'	12°09'59"	54.10'	107.59'	S 34°41'44" W

**FLOOD ZONE:**  
 THIS PROPERTY IS LOCATED IN FEDERAL FLOOD ZONE "X", AREAS DETERMINED TO BE OUTSIDE THE 0.2% ANNUAL CHANCE FLOODPLAIN, AND IN FEDERAL FLOOD ZONE "A", AREAS SUBJECT TO INUNDATION BY THE 1% ANNUAL CHANCE FLOOD (NO BASE FLOOD ELEVATIONS DETERMINED) AS INTERPOLATED FROM F.I.R.M. PANEL NO. 12001C0120 D, EFFECTIVE DATE: JUNE 16, 2006.

130 NW 75th Drive  
Gainesville, Florida 32607  
(882) 331-1976 / (882) 331-2476  
www.chw-inc.com  
est. 1988 FLORIDA  
LS-5075

**CHW**  
Professional Computers

JAMES MCCAULEY, M.D.  
Professional Surveyor & Mapper  
License No. 6791

AARON H. HICKMAN  
Professional Surveyor & Mapper  
License No. 6791

This map prepared by:  
Certificate of Authorization No. LB-5075  
NOT VALID WITHOUT THE SIGNATURE AND ORIGINAL RAISED SEAL OF A FLORIDA LICENSED SURVEYOR AND MAPPER

SURVEY DATE: 2/7/2017  
REVISION DATE: N/A  
CHECKED BY: AHH  
FIELD BOOK & PAGE: 598A-54, 48-52, 67, 68, 70-72

SCALE: 1" = 100'  
VERIFY SCALE ON ORIGINAL DRAWING  
0" MEANS USE UNLESS OTHERWISE NOTED  
THIS SHEET ADJUST SCALES ACCORDINGLY.

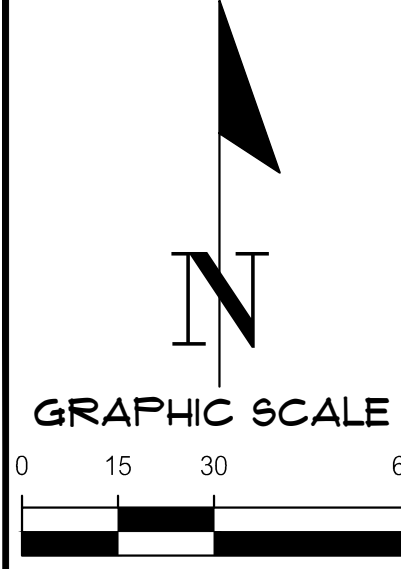
SHEET NO.: 1 OF 4

Tech: aaronh Plot Date: May 18, 2017 2:12pm filename: L:\2016\18-0838A\Survey\Topographic\DWG\18-0838 - McCauley\topo.dwg

# TOPOGRAPHIC SURVEY

LOCATED IN SECTIONS 4 & 9, TOWNSHIP 8 SOUTH, RANGE 18 EAST,  
CITY OF ALACHUA, FLORIDA

TAX PARCEL 03053-01-001  
OWNER: HPP INVESTMENTS, LLC



### FLOOD ZONE:

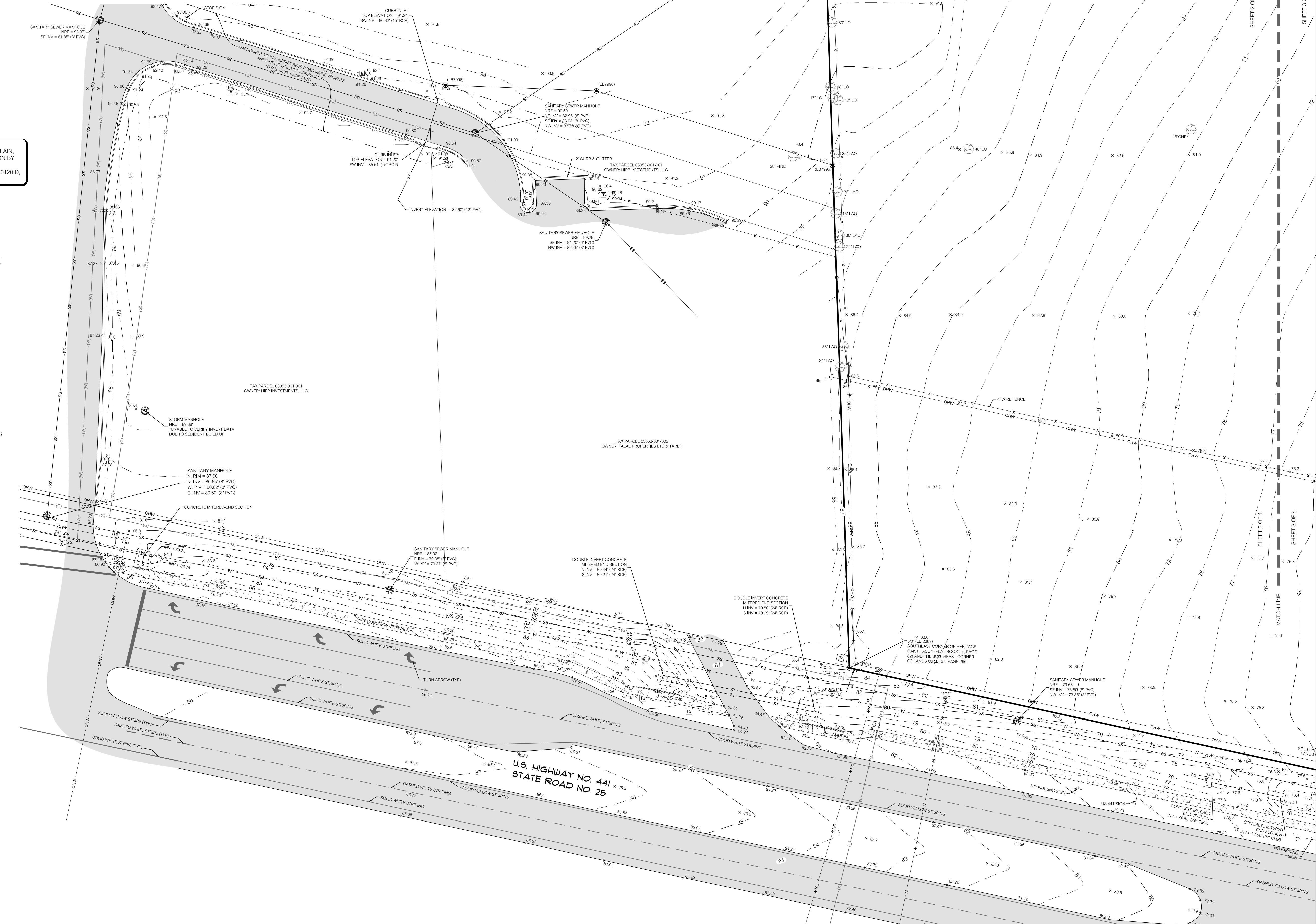
THIS PROPERTY IS LOCATED IN FEDERAL FLOOD ZONE "X", AREAS DETERMINED TO BE OUTSIDE THE 0.2% ANNUAL CHANCE FLOODPLAIN, AND IN FEDERAL FLOOD ZONE "X", AREAS SUBJECT TO INUNDATION BY THE 1% ANNUAL CHANCE FLOOD (NO BASE FLOOD ELEVATIONS DETERMINED) AS INTERPOLATED FROM F.I.R.M. PANEL NO. 12001C0120.D, EFFECTIVE DATE: JUNE 18, 2006.

### SURVEYOR'S NOTES:

- NO UNDERGROUND INSTALLATION OF UTILITIES OR IMPROVEMENTS HAVE BEEN LOCATED EXCEPT AS SHOWN.
- THE SURVEYOR HAS NO KNOWLEDGE OF UNDERGROUND FOUNDATIONS WHICH MAY ENCRoACH.
- INSTRUMENTS OF RECORD REFLECTING EASEMENTS, RIGHTS-OF-WAY, AND OR OWNERSHIP WERE NOT FURNISHED TO THE SURVEYOR EXCEPT AS SHOWN. SEARCH OF THE PUBLIC RECORDS HAS NOT BEEN DONE BY THE SURVEYOR.
- FENCES, SYMBOLS, MONUMENTATION AND UTILITIES SHOWN HEREON MAY BE EXAGGERATED FOR PICTORIAL PURPOSES ONLY AND MAY NOT BE SHOWN TO SCALE.
- ELEVATIONS SHOWN HEREON ARE NORTH AMERICAN DATUM OF 1988 (NAD88) PROJECTED FROM RECOVERED BENCHMARK C 51-676 CONCRETE MONUMENT AND BRASS CAP STAMPED C 51 1934 HAVING A PUBLISHED ELEVATION OF 75.14 FEET.
- THIS MAP CONSISTS OF THREE SHEETS TOTAL, EACH SHEET IS NOT COMPLETE WITHOUT THE OTHERS.
- LOCATIONS OF UNDERGROUND UTILITIES SHOWN HEREON ARE APPROXIMATE AND ARE MAPPED BASED ON FIELD LOCATED PAINT MARKINGS BY OTHERS, AND VISIBLE SURFACE EVIDENCE THEREOF, IN CONJUNCTION WITH UTILITY MAPS FURNISHED FROM THE CITY OF ALACHUA AND GAINESVILLE REGIONAL UTILITIES. NO EXCAVATION OF UNDERGROUND UTILITIES WAS PERFORMED BY THIS SURVEYOR.
- THIS SURVEY CONSIST OF 4 SHEETS TOTAL, SEE SHEET 1 OF 4 FOR OVERALL TOPO AND ALL REMAINING SHEET FOR DETAILED TOPOGRAPHIC INFORMATION.
- WETLAND FLAGS SHOWN HEREON WERE ESTABLISHED BY ECOSYSTEMS RESEARCH CORPORATION.

### LEGEND:

- NAD88 = NORTH AMERICAN VERTICAL DATUM OF 1988  
NRE = NORTH RIM ELEVATION  
INV = INVERT ELEVATION  
PVC = POLYVINYL CHLORIDE  
S.F. = SQUARE FEET  
RCP = REINFORCED CONCRETE PIPE  
O.R.B. = OFFICIAL RECORDS BOOK  
LO = LIVE OAK  
LAO = LAUREL OAK  
CHRY = CHERRY TREE  
HACK = HACKBERRY  
D.E. = DRAINAGE EASEMENT  
DRA = DRAINAGE RETENTION AREA  
(TYP) = TYPICAL  
CMP = CORRUGATED METAL PIPE  
WL XX ▲ = WETLAND FLAG  
● = FOUND 4"x4" CONCRETE MONUMENT (MARKED AS NOTED)  
● = FOUND 5/8" STEEL REBAR & CAP MARKED AS NOTED  
● = FOUND 5/8" STEEL REBAR AND CAP MARKED "CHW INC LB 5075"  
● = BENCHMARK  
○ = CLEANOUT  
○ = CONCRETE POWER POLE  
○ = CABLE TELEVISION BOX  
○ = ELECTRIC BOX  
○ = ELECTRIC METER  
○ = FIRE HYDRANT  
○ = FIBER OPTIC BOX  
○ = GUY ANCHOR  
○ = SIGN  
○ = TREE (SIZE AND TYPE AS NOTED)  
○ = SANITARY SEWER MANHOLE  
○ = STORM SEWER MANHOLE  
○ = TELEPHONE PEDESTAL  
○ = TRANSFORMER  
○ = TRAFFIC SIGNAL BOX  
○ = METAL LIGHT POLE  
○ = WOOD LIGHT POLE  
○ = WOODEN POWER POLE  
○ = WATER VALVE  
○ = WATER METER  
○ = BOLLARD  
○ = MONITORING WELL  
○ = ILLUMINATION BOLLARD  
○ = UNDERGROUND ELECTRIC LINE  
○ = OVER-HEAD WIRE  
○ = SANITARY SEWER LINE  
○ = UNDERGROUND WATER LINE  
○ = FENCE (SIZE AND TYPE AS NOTED)  
○ = STORM SEWER LINE  
○ = UNDERGROUND GAS LINE  
○ = UNDERGROUND WATER LINE (PER UTILITY MAPS)  
○ = UNDERGROUND GAS LINE (PER UTILITY MAPS)  
○ = HAND RAIL  
○ = CONTIGUR LINE  
○ = END OF FEATURE  
○ = NOT DETERMINED  
○ = ASPHALT SURFACE  
○ = CONCRETE SURFACE



190 NW 75th Circle  
Gainesville, Florida 32607  
(850) 351-1976 / (850) 351-2476  
www.chw-fl.com  
est. 1988 FLORIDA  
LB-5075

**CHW**  
Professional Consultants

SCALE: 1" = 30'  
VERIFY SCALE ON ORIGINAL DRAWING  
DO NOT USE UNLESS THIS SHEET ADJUST SCALES ACCORDINGLY.

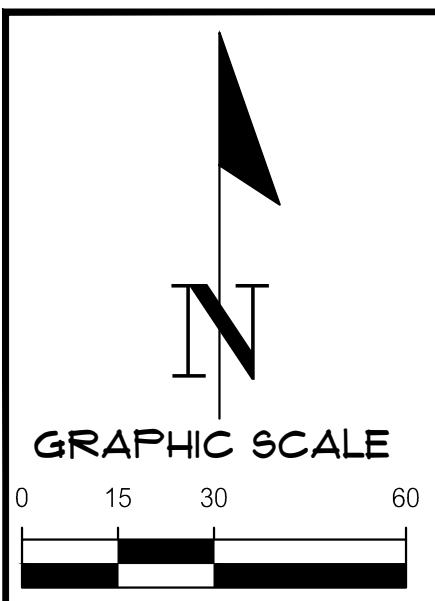
JAMES MCCAULEY, M.D.

SHEET NO. 2 OF 4

10-0638

16-0638

Professional Surveyor & Mapper Fla. License No. 6791



**SURVEYOR'S NOTES:**

- NO UNDERGROUND INSTALLATION OF UTILITIES OR IMPROVEMENTS HAVE BEEN LOCATED EXCEPT AS SHOWN.
- THE SURVEYOR HAS NO KNOWLEDGE OF UNDERGROUND FOUNDATIONS WHICH MAY ENCRUST.
- INSTRUMENTS OF RECORD REFLECTING EASEMENTS, RIGHTS-OF-WAY, AND OR OWNERSHIP WERE NOT FURNISHED TO THE SURVEYOR EXCEPT AS SHOWN. SEARCH OF THE PUBLIC RECORDS HAS NOT BEEN DONE BY THE SURVEYOR.
- FENCES, SYMBOLS, MONUMENTATION AND UTILITIES SHOWN HEREON MAY BE EXAGGERATED FOR PICTORIAL PURPOSES ONLY AND MAY NOT BE SHOWN TO SCALE.
- ELEVATIONS SHOWN HEREON ARE NORTH AMERICAN DATUM OF 1988 (NAVD88) PROJECTED FROM RECOVERED BENCHMARK C 51 - 6'X6" CONCRETE MONUMENT AND BRASS CAP STAMPED C 51 1934 HAVING A PUBLISHED ELEVATION OF 75.14 FEET.
- THIS MAP CONSISTS OF THREE SHEETS TOTAL. EACH SHEET IS NOT COMPLETE WITHOUT THE OTHERS.
- LOCATIONS OF UNDERGROUND UTILITIES SHOWN HEREON ARE APPROXIMATE AND ARE MAPPED BASED ON FIELD LOCATED PAINT MARKINGS BY OTHERS, AND VISIBLE SURFACE EVIDENCE THEREOF. IN CONJUNCTION WITH UTILITY MAPS FURNISHED FROM THE CITY OF ALACHUA AND GAINESVILLE REGIONAL UTILITIES, NO EXCAVATION OF UNDERGROUND UTILITIES WAS PERFORMED BY THIS SURVEYOR.
- THIS SURVEY CONSIST OF 4 SHEETS TOTAL. SEE SHEET 1 OF 4 FOR OVERALL TOPO AND ALL REMAINING SHEETS FOR DETAILED TOPOGRAPHIC INFORMATION.
- WETLAND FLAGS SHOWN HEREON WERE ESTABLISHED BY ECOSYSTEMS RESEARCH CORPORATION.

**LEGEND:**

NAVD88 = NORTH AMERICAN VERTICAL DATUM OF 1988  
 NRE = NORTH RIM ELEVATION  
 INV = INVERT ELEVATION  
 PVC = POLYVINYL CHLORIDE  
 S.F. = SQUARE FEET  
 RCP = REINFORCED CONCRETE PIPE  
 O.R.B. = OFFICIAL RECORDS BOOK  
 L.O. = LINE OAK  
 LAO = LAUREL OAK  
 CHRY = CHERRY TREE  
 HACK = HACKBERRY  
 D.E. = DRAINAGE EASEMENT  
 DRA = DRAINAGE RETENTION AREA  
 (TYP) = TYPICAL  
 CMP = CORRUGATED METAL PIPE  
 WL XX ▲ = WETLAND FLAG  
 □ = FOUND 4"x4" CONCRETE MONUMENT (MARKED AS NOTED)  
 ● = FOUND 5/8" STEEL REBAR & CAP MARKED AS NOTED  
 ● = FOUND 5/8" STEEL REBAR AND CAP MARKED "CHW INC LB 5075"  
 □ = TRAFFIC SIGNAL BOX  
 □ = METAL LIGHT POLE  
 □ = WOOD LIGHT POLE  
 □ = WOODEN POWER POLE

# TOPOGRAPHIC SURVEY

## LOCATED IN SECTIONS 4 & 9, TOWNSHIP 8 SOUTH, RANGE 18 EAST, CITY OF ALACHUA, FLORIDA

○ = BENCHMARK  
 ○ = CLEANOUT  
 ○ = CONCRETE POWER POLE  
 ○ = INVERT TELEVISION BOX  
 ○ = ELECTRIC BOX  
 ○ = ELECTRIC METER  
 ○ = FIRE HYDRANT  
 ○ = SIGN  
 ○ = GLY ANCHOR  
 ○ = SIGN  
 ○ = TREE (SIZE AND TYPE AS NOTED)  
 ○ = SANITARY SEWER MANHOLE (TYP)  
 ○ = STORM SEWER MANHOLE  
 ○ = TELEPHONE PEDESTAL  
 ○ = TRANSFORMER  
 ○ = WATER VALVE  
 ○ = WATER METER  
 ○ = BOLLARD  
 ○ = MONITORING WELL  
 ○ = ILLUMINATION BOLLARD  
 — E — = UNDERGROUND ELECTRIC LINE  
 — OHW — = OVERHEAD WIRE  
 — SS — = SANITARY SEWER LINE  
 — W — = UNDERGROUND WATER LINE  
 — X — = FENCE (SIZE AND TYPE AS NOTED)  
 — ST — = STORM SEWER LINE  
 — G — = UNDERGROUND GAS LINE  
 — (V) — = UNDERGROUND WATER LINE (PER UTILITY MAPS)  
 — (G) — = UNDERGROUND GAS LINE (PER UTILITY MAPS)  
 — (F) — = FIBER OPTIC BOX  
 — (H) — = HAND RAIL  
 — (C) — = CONTOUR LINE  
 — (E) — = END OF FEATURE NOT DETERMINED  
 — (A) — = ASPHALT SURFACE  
 — (C) — = CONCRETE SURFACE



190 NW 75th Drive  
 Gainesville, Florida 32607  
 (882) 331-1976 / (882) 331-2476  
 www.chw-inc.com  
 est. 1988 FLORIDA  
 LB-5075

**CHW**  
 Professional Consultants

JAMES MCCAULEY, M.D.  
 PROFESSIONAL SURVEYOR & MAPPER

SCALE: 1" = 30'  
 REFER TO SHEET NO. 10-0638  
 SURVEY DATE: 2/7/2017  
 REVISION DATE: N/A  
 CHECKED BY: AHH  
 PROJECT NUMBER: 10-0638  
 FIELD BOOK & PAGE: 5882244, 48-52/7, 68, 70, 72

This map prepared by:  
 AARON H. HICKMAN  
 Certificate of Authorization No. LB. 5075  
 NOT VALID WITHOUT THE SIGNATURE AND ORIGINAL RAISED SEAL OF A FLORIDA LICENSED SURVEYOR AND MAPPER

SEE SHEET 1 OF 4  
 Professional Surveyor & Mapper Fla. License No. 6791

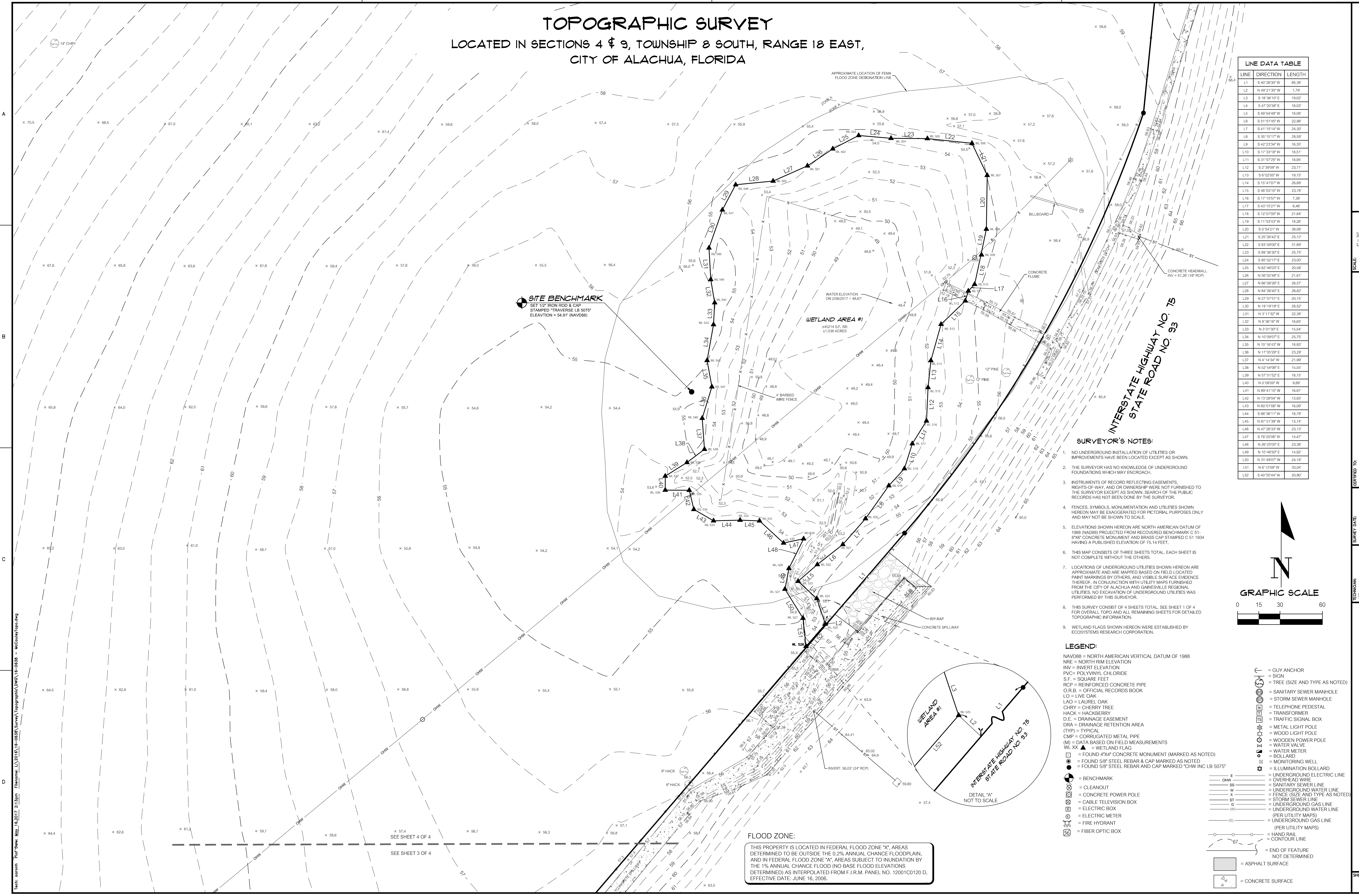
SHEET NO.: 3 OF 4

**FLOOD ZONE:**

THIS PROPERTY IS LOCATED IN FEDERAL FLOOD ZONE "X". AREAS DETERMINED TO BE OUTSIDE THE 0.2% ANNUAL CHANCE FLOODPLAIN, AND IN FEDERAL FLOOD ZONE "X", AREAS SUBJECT TO INUNDATION BY THE 1% ANNUAL CHANCE FLOOD (NO BASE FLOOD ELEVATIONS DETERMINED) AS INTERPOLATED FROM F.I.R.M. PANEL NO. 12001C0120 D, EFFECTIVE DATE: JUNE 16, 2006.

# TOPOGRAPHIC SURVEY

LOCATED IN SECTIONS 4 & 9, TOWNSHIP 8 SOUTH, RANGE 18 EAST,  
CITY OF ALACHUA, FLORIDA



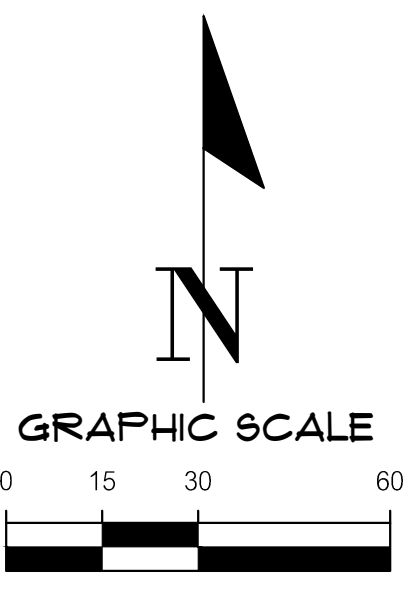
LINE	DIRECTION	LENGTH
L1	S 40° 38' 30" W	85.30
L2	N 49° 21' 30" W	1.79
L3	S 19° 36' 10" E	19.02
L4	S 47° 20' 38" E	18.03
L5	S 49° 04' 48" W	18.08
L6	S 51° 51' 45" W	22.98
L7	S 41° 15' 14" W	24.30
L8	S 35° 15' 17" W	26.69
L9	S 42° 23' 34" W	16.35
L10	S 17° 33' 18" W	16.51
L11	S 31° 57' 25" W	19.39
L12	S 2° 39' 09" W	23.71
L13	S 8° 52' 02" W	19.15
L14	S 15° 41' 03" W	26.69
L15	S 46° 02' 10" W	23.79
L16	S 17° 15' 57" W	7.38
L17	S 43° 15' 23" W	6.48
L18	S 12° 07' 00" W	21.64
L19	S 11° 53' 43" W	18.28
L20	S 0° 54' 21" W	38.68
L21	S 25° 26' 42" E	25.12
L22	S 83° 59' 00" E	31.69
L23	S 89° 38' 30" E	25.79
L24	S 85° 02' 11" E	23.00
L25	N 62° 48' 00" E	20.58
L26	N 56° 02' 48" E	21.81
L27	N 66° 06' 28" E	26.57
L28	N 84° 26' 47" E	26.62
L29	N 27° 57' 51" E	20.19
L30	N 19° 19' 19" E	28.52
L31	N 3° 11' 32" W	22.38
L32	N 9° 36' 16" W	16.65
L33	N 3° 01' 30" E	15.64
L34	N 10° 09' 00" E	25.79
L35	N 10° 18' 53" W	18.93
L36	N 17° 05' 29" E	23.29
L37	N 4° 14' 34" W	21.99
L38	N 52° 54' 09" E	15.52
L39	N 57° 51' 52" E	18.15
L40	N 0° 09' 00" W	9.89
L41	N 89° 41' 10" W	16.97
L42	N 13° 28' 04" W	13.97
L43	N 60° 01' 08" W	16.39
L44	S 88° 35' 17" W	18.79
L45	N 87° 51' 39" W	13.74
L46	N 47° 28' 33" W	23.13
L47	S 78° 20' 08" W	14.47
L48	N 26° 23' 00" E	23.38
L49	N 16° 48' 57" E	14.92
L50	N 31° 48' 07" E	24.18
L51	N 6° 12' 09" W	20.94
L52	S 40° 55' 44" W	20.80

- SURVEYOR'S NOTES:**
- NO UNDERGROUND INSTALLATION OF UTILITIES OR IMPROVEMENTS HAVE BEEN LOCATED EXCEPT AS SHOWN.
  - THE SURVEYOR HAS NO KNOWLEDGE OF UNDERGROUND FOUNDATIONS WHICH MAY ENCROACH.
  - INSTRUMENTS OF RECORD REFLECTING EASEMENTS, RIGHTS-OF-WAY, AND OR OWNERSHIP WERE NOT FURNISHED TO THE SURVEYOR EXCEPT AS SHOWN. SEARCH OF THE PUBLIC RECORDS HAS NOT BEEN DONE BY THE SURVEYOR.
  - FENCES, SYMBOLS, MONUMENTATION AND UTILITIES SHOWN HEREON MAY BE EXAGGERATED FOR PICTORIAL PURPOSES ONLY AND MAY NOT BE SHOWN TO SCALE.
  - ELEVATIONS SHOWN HEREON ARE NORTH AMERICAN DATUM OF 1988 (NAVD88) PROJECTED FROM RECOVERED BENCHMARK C 51-67X CONCRETE MONUMENT AND BRASS CAP STAMPED C 51 1934 HAVING A PUBLISHED ELEVATION OF 75.14 FEET.
  - THIS MAP CONSISTS OF THREE SHEETS TOTAL. EACH SHEET IS NOT COMPLETE WITHOUT THE OTHERS.
  - LOCATIONS OF UNDERGROUND UTILITIES SHOWN HEREON ARE APPROXIMATE AND ARE MAPPED BASED ON FIELD LOCATED PAINT MARKINGS BY OTHERS, AND VISIBLE SURFACE EVIDENCE THEREOF. IN CONJUNCTION WITH UTILITY MAPS FURNISHED FROM THE CITY OF ALACHUA AND GAINESVILLE REGIONAL UTILITIES, NO EXCAVATION OF UNDERGROUND UTILITIES WAS PERFORMED BY THIS SURVEYOR.
  - THIS SURVEY CONSIST OF 4 SHEETS TOTAL. SEE SHEET 1 OF 4 FOR OVERALL TOPO AND ALL REMAINING SHEETS FOR DETAILED TOPOGRAPHIC INFORMATION.
  - WETLAND FLAGS SHOWN HEREON WERE ESTABLISHED BY ECOSYSTEMS RESEARCH CORPORATION.

- LEGEND:**
- NAVD88 = NORTH AMERICAN VERTICAL DATUM OF 1988  
 NRE = NORTH RIM ELEVATION  
 INV = INVERT ELEVATION  
 PVC = POLYVINYL CHLORIDE  
 S.F. = SQUARE FEET  
 RCP = REINFORCED CONCRETE PIPE  
 O.R.B. = OFFICIAL RECORDS BOOK  
 LO = LIVE OAK  
 LAO = LAUREL OAK  
 CHRY = CHERRY TREE  
 HACK = HACKBERRY  
 D.E. = DRAINAGE EASEMENT  
 DRA = DRAINAGE RETENTION AREA  
 (TYP) = TYPICAL  
 CMP = CORRUGATED METAL PIPE  
 (M) = DATA BASED ON FIELD MEASUREMENTS  
 WL, ▲ = WETLAND FLAG  
 [ ] = FOUND 4"x4" CONCRETE MONUMENT (MARKED AS NOTED)  
 [ ] = FOUND 5/8" STEEL REBAR & CAP MARKED AS NOTED  
 [ ] = FOUND 5/8" STEEL REBAR AND CAP MARKED "CHW INC LB 5075"
- [ ] = BENCHMARK  
 [ ] = OVERHEAD WIRE  
 [ ] = CONCRETE POWER POLE  
 [ ] = CABLE TELEVISION BOX  
 [ ] = ELECTRIC BOX  
 [ ] = ELECTRIC METER  
 [ ] = FIRE HYDRANT  
 [ ] = FIBER OPTIC BOX  
 [ ] = GLUY ANCHOR  
 [ ] = TREE (SIZE AND TYPE AS NOTED)  
 [ ] = SANITARY SEWER MANHOLE  
 [ ] = STORM SEWER MANHOLE  
 [ ] = TELEPHONE PEDESTAL  
 [ ] = TRANSFORMER  
 [ ] = TRAFFIC SIGNAL BOX  
 [ ] = METAL LIGHT POLE  
 [ ] = WOOD LIGHT POLE  
 [ ] = WOODEN POWER POLE  
 [ ] = WATER VALVE  
 [ ] = WATER METER  
 [ ] = SOLAR  
 [ ] = MONITORING WELL  
 [ ] = ILLUMINATION BOLLARD  
 [ ] = UNDERGROUND ELECTRIC LINE  
 [ ] = OVERHEAD WIRE  
 [ ] = SANITARY SEWER LINE  
 [ ] = UNDERGROUND WATER LINE  
 [ ] = FENCE (SIZE AND TYPE AS NOTED)  
 [ ] = STORM SEWER LINE  
 [ ] = UNDERGROUND GAS LINE  
 [ ] = UNDERGROUND WATER LINE  
 [ ] = UNDERGROUND GAS LINE (PER UTILITY MAPS)  
 [ ] = UNDERGROUND GAS LINE (PER UTILITY MAPS)  
 [ ] = HAND RAIL  
 [ ] = CONTOUR LINE  
 [ ] = ASPHALT SURFACE  
 [ ] = CONCRETE SURFACE

**FLOOD ZONE:**

THIS PROPERTY IS LOCATED IN FEDERAL FLOOD ZONE "X", AREAS DETERMINED TO BE OUTSIDE THE 0.2% ANNUAL CHANCE FLOODPLAIN, AND IN FEDERAL FLOOD ZONE "A", AREAS SUBJECT TO INUNDATION BY THE 1% ANNUAL CHANCE FLOOD (NO BASE FLOOD ELEVATIONS DETERMINED) AS INTERPOLATED FROM F.I.R.M. PANEL NO. 12001C0120 D, EFFECTIVE DATE: JUNE 16, 2006.



**CHW**  
Professional Computers

130 NW 75th Drive  
Gainesville, Florida 32607  
(850) 351-1975 / (850) 351-2476  
www.chw-inc.com  
est. 1988 FL-0075

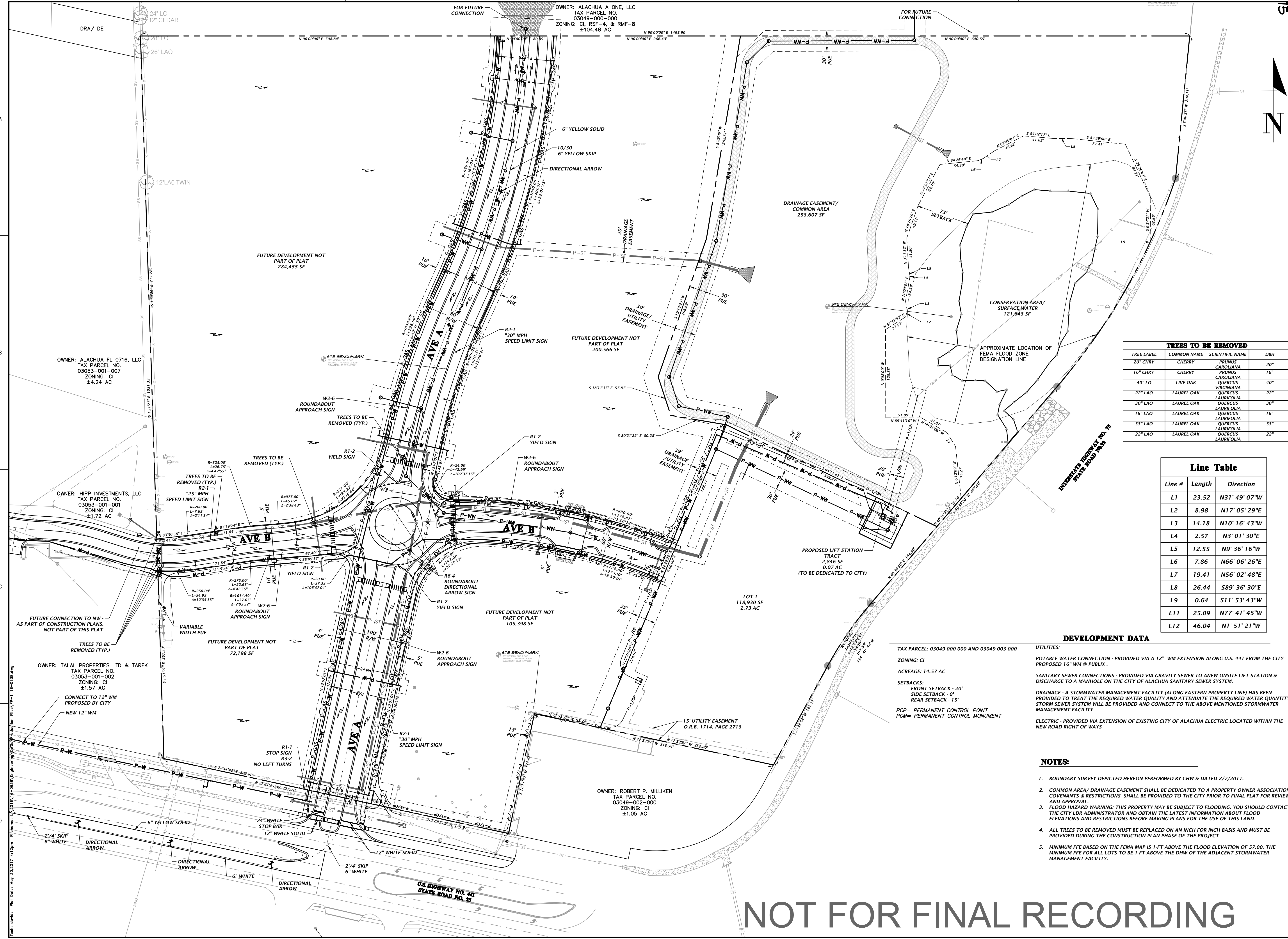
JAMES MCCAULEY, M.D.  
Professional Surveyor & Mapper  
Fla. License No. 6791

AARON H. HICKMAN  
SEE SHEET 1 OF 4  
Professional Surveyor & Mapper  
Fla. License No. 6791

This map prepared by:  
Certificate of Authorization No. LB-5075  
NOT VALID WITHOUT THE SIGNATURE AND ORIGINAL RAISED SEAL OF A FLORIDA LICENSED SURVEYOR AND MAPPER

SHEET NO:  
**4 OF 4**

SURVEY DATE: 2/7/2017  
REVISION DATE: N/A  
CHECKED BY: AHH  
FIELD BOOK & PAGE: 588/244, 48-52/7, 68/70, 75  
PROJECT NUMBER: 10-0638



OWNER: ALACHUA A ONE, LLC  
 TAX PARCEL NO. 03049-000-000  
 ZONING: CI, RSF-4, & RMF-B  
 ±104.48 AC

OWNER: ALACHUA FL 0716, LLC  
 TAX PARCEL NO. 03053-001-007  
 ZONING: CI  
 ±4.24 AC

OWNER: HIPP INVESTMENTS, LLC  
 TAX PARCEL NO. 03053-001-001  
 ZONING: CI  
 ±1.72 AC

OWNER: TALAL PROPERTIES LTD & TAREK  
 TAX PARCEL NO. 03053-001-002  
 ZONING: CI  
 ±1.57 AC

OWNER: ROBERT P. MILLIKEN  
 TAX PARCEL NO. 03049-002-000  
 ZONING: CI  
 ±1.05 AC

OWNER: ALACHUA A ONE, LLC  
 TAX PARCEL NO. 03049-003-000  
 ZONING: CI  
 ACREAGE: 14.57 AC

OWNER: HIPP INVESTMENTS, LLC  
 TAX PARCEL NO. 03053-001-001  
 ZONING: CI  
 ±1.72 AC

OWNER: TALAL PROPERTIES LTD & TAREK  
 TAX PARCEL NO. 03053-001-002  
 ZONING: CI  
 ±1.57 AC

OWNER: ROBERT P. MILLIKEN  
 TAX PARCEL NO. 03049-002-000  
 ZONING: CI  
 ±1.05 AC

OWNER: ALACHUA A ONE, LLC  
 TAX PARCEL NO. 03049-003-000  
 ZONING: CI  
 ACREAGE: 14.57 AC

**TREES TO BE REMOVED**

TREE LABEL	COMMON NAME	SCIENTIFIC NAME	DBH
20" CHRY	CHERRY	PRUNUS CAROLIANA	20"
16" CHRY	CHERRY	PRUNUS CAROLIANA	16"
40" LO	LIVE OAK	QUERCUS VIRGINIANA	40"
22" LAO	LAUREL OAK	QUERCUS LAURIFOLIA	22"
30" LAO	LAUREL OAK	QUERCUS LAURIFOLIA	30"
16" LAO	LAUREL OAK	QUERCUS LAURIFOLIA	16"
33" LAO	LAUREL OAK	QUERCUS LAURIFOLIA	33"
22" LAO	LAUREL OAK	QUERCUS LAURIFOLIA	22"

**Line Table**

Line #	Length	Direction
L1	23.52	N31° 49' 07"W
L2	8.98	N17° 05' 29"E
L3	14.18	N10° 16' 43"W
L4	2.57	N3° 01' 30"E
L5	12.55	N9° 36' 16"W
L6	7.86	N66° 06' 26"E
L7	19.41	N56° 02' 48"E
L8	26.44	S89° 36' 30"E
L9	0.64	S11° 53' 43"W
L11	25.09	N77° 41' 45"W
L12	46.04	N1° 51' 21"W

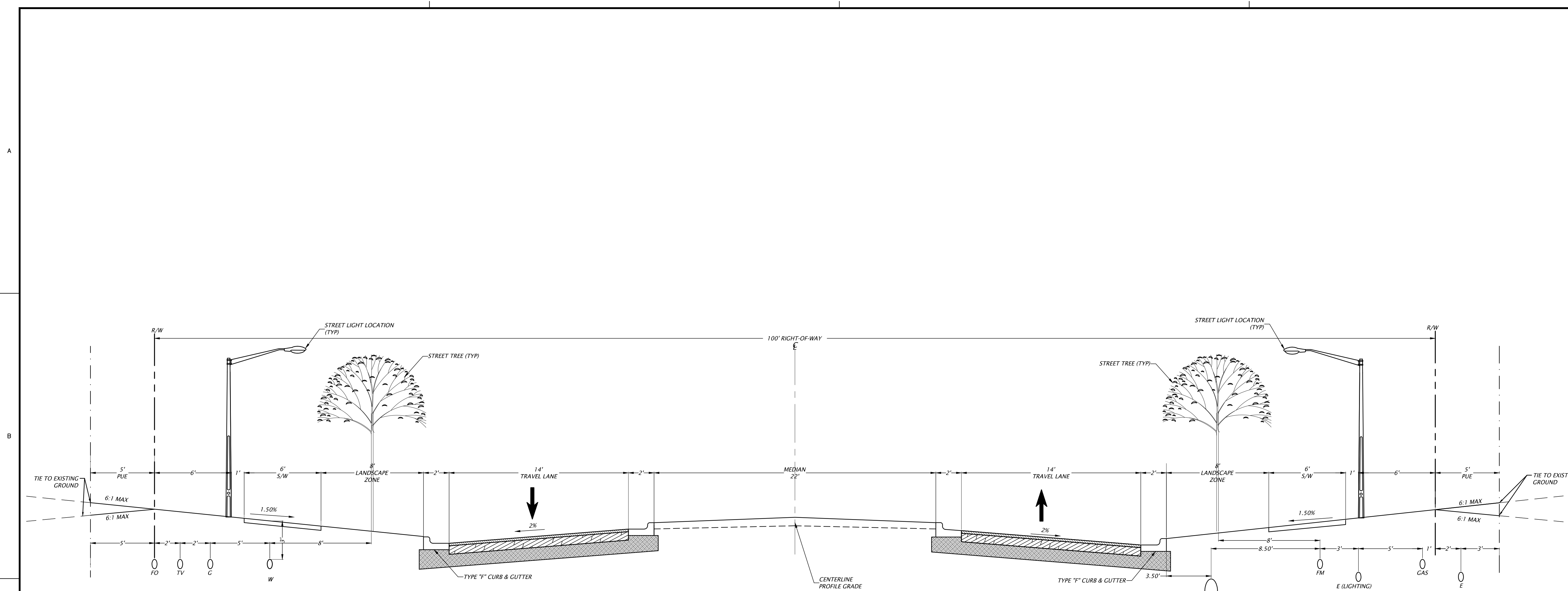
**DEVELOPMENT DATA**

TAX PARCEL: 03049-000-000 AND 03049-003-000  
 ZONING: CI  
 ACREAGE: 14.57 AC  
 SETBACKS:  
 FRONT SETBACK - 20'  
 SIDE SETBACK - 0'  
 REAR SETBACK - 15'  
 PCP= PERMANENT CONTROL POINT  
 PCM= PERMANENT CONTROL MONUMENT

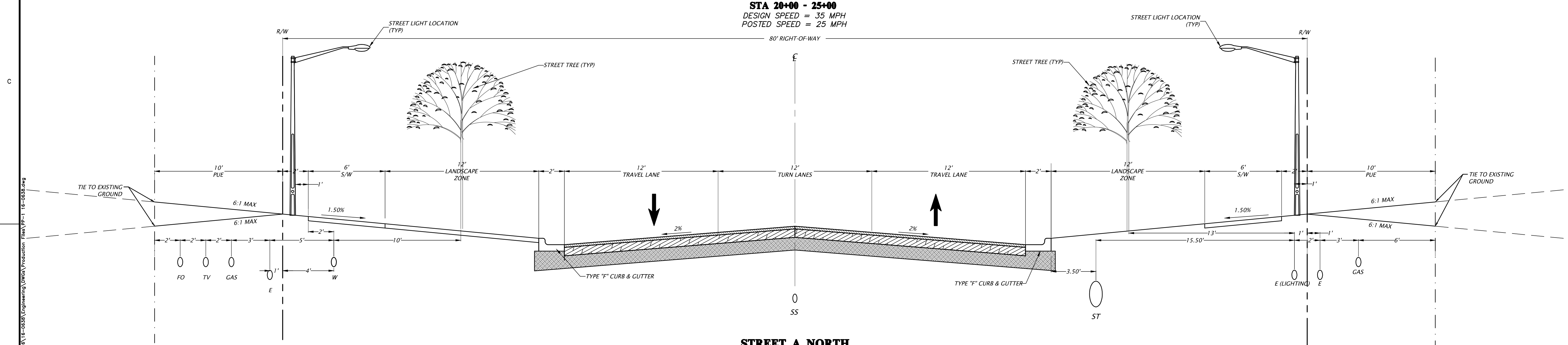
**UTILITIES:**  
 POTABLE WATER CONNECTION - PROVIDED VIA A 12" WM EXTENSION ALONG U.S. 441 FROM THE CITY PROPOSED 16" WM @ PUBLIX.  
 SANITARY SEWER CONNECTIONS - PROVIDED VIA GRAVITY SEWER TO ANEW ONSITE LIFT STATION & DISCHARGE TO A MANHOLE ON THE CITY OF ALACHUA SANITARY SEWER SYSTEM.  
 DRAINAGE - A STORMWATER MANAGEMENT FACILITY (ALONG EASTERN PROPERTY LINE) HAS BEEN PROVIDED TO TREAT THE REQUIRED WATER QUALITY AND ATTENUATE THE REQUIRED WATER QUANTITY. STORM SEWER SYSTEM WILL BE PROVIDED AND CONNECT TO THE ABOVE MENTIONED STORMWATER MANAGEMENT FACILITY.  
 ELECTRIC - PROVIDED VIA EXTENSION OF EXISTING CITY OF ALACHUA ELECTRIC LOCATED WITHIN THE NEW ROAD RIGHT OF WAYS

- NOTES:**
- BOUNDARY SURVEY DEPICTED HEREON PERFORMED BY CHW & DATED 2/7/2017.
  - COMMON AREA/ DRAINAGE EASEMENT SHALL BE DEDICATED TO A PROPERTY OWNER ASSOCIATION COVENANTS & RESTRICTIONS SHALL BE PROVIDED TO THE CITY PRIOR TO FINAL PLAT FOR REVIEW AND APPROVAL.
  - FLOOD HAZARD WARNING: THIS PROPERTY MAY BE SUBJECT TO FLOODING. YOU SHOULD CONTACT THE CITY LDR ADMINISTRATOR AND OBTAIN THE LATEST INFORMATION ABOUT FLOOD ELEVATIONS AND RESTRICTIONS BEFORE MAKING PLANS FOR THE USE OF THIS LAND.
  - ALL TREES TO BE REMOVED MUST BE REPLACED ON AN INCH FOR INCH BASIS AND MUST BE PROVIDED DURING THE CONSTRUCTION PLAN PHASE OF THE PROJECT.
  - MINIMUM FFE BASED ON THE FEMA MAP IS 1-FT ABOVE THE FLOOD ELEVATION OF 57.00. THE MINIMUM FFE FOR ALL LOTS TO BE 1-FT ABOVE THE DHW OF THE ADJACENT STORMWATER MANAGEMENT FACILITY.

NOT FOR FINAL RECORDING



**STREET A SOUTH**  
**100' RIGHT-OF-WAY**  
**STA 20+00 - 25+00**  
DESIGN SPEED = 35 MPH  
POSTED SPEED = 25 MPH

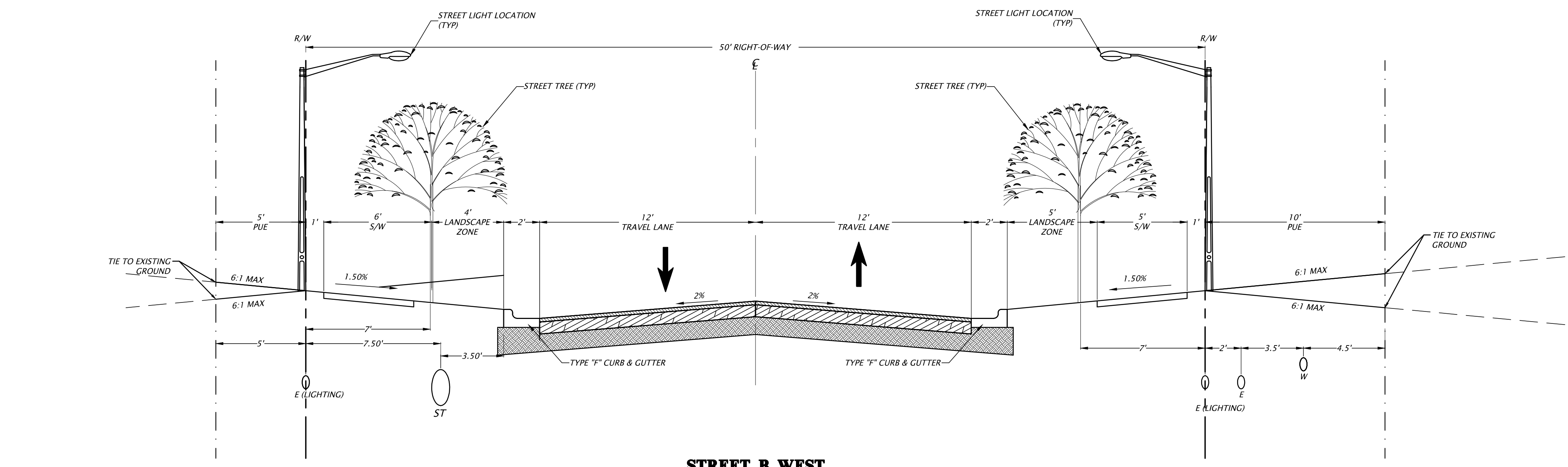


**STREET A NORTH**  
**100' RIGHT-OF-WAY**  
**STA 26+00 - 32+00**  
DESIGN SPEED = 35 MPH  
POSTED SPEED = 25 MPH

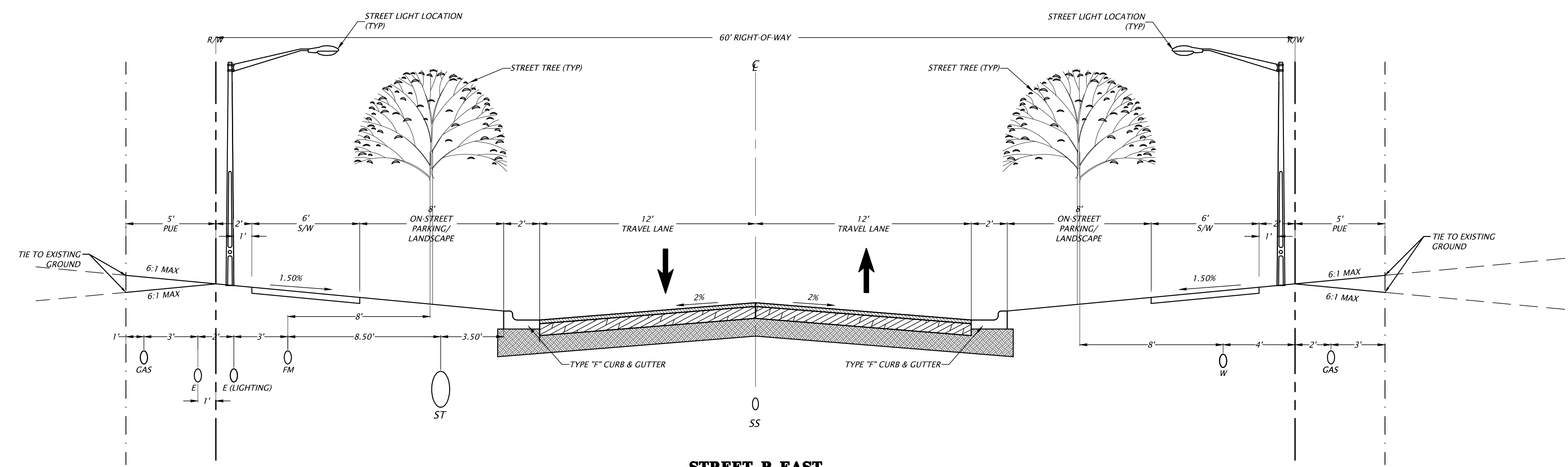
**NOT FOR FINAL RECORDING**

Project: Highpoint Crossing, File: 16-06.36.dwg, Date: 05/18/2017, Time: 3:01pm, Location: C:\Users\jwalpole\OneDrive\Engineering\Projects\16-06.36.dwg  
 Plot Date: May 30, 2017 3:01pm, Filename: C:\Users\jwalpole\OneDrive\Engineering\Projects\16-06.36.dwg

A  
B  
C  
D



**STREET B WEST**  
**50' RIGHT-OF-WAY**  
**STA 10+00 - 12+50**  
 DESIGN SPEED = 30 MPH  
 POSTED SPEED = 25 MPH



**STREET B EAST**  
**60' RIGHT-OF-WAY**  
**STA 14+50 - 17+60**  
 DESIGN SPEED = 30 MPH  
 POSTED SPEED = 25 MPH

Plot Date: May 30, 2017 3:01pm Filename: C:\2017\16-0635\Engineering\DWG\Production\Plan\16-0635.dwg

132 NW 7th, Ditch  
 Gainesville, Florida 32607  
 (882) 351-1976 / (882) 351-2476  
 www.chim-inc.com  
 est. 1986 FLORIDA  
 CA-5075

**CHIM**  
 Professional Corporation

SCALE: 1"=4'  
 SHOWN SCALE ON  
 BAR SCALE  
 ORIGINAL DRAWING  
 0 USE THE SHOWN SCALE ON THIS SHEET, ADJUST SCALES ACCORDINGLY.

CONSTRUCTION PERMITS

04/27/2017 - CITY OF ALACHUA  
 05/10/2017 - RE-SUBMITTAL TO CITY OF ALACHUA  
 05/18/2017 - RE-SUBMITTAL TO CITY OF ALACHUA  
 05/31/2017 - P2B SUBMITTAL TO CITY OF ALACHUA

CLIENT: ALACHUA A ONE, LLC  
 PROJECT: HIGHPOINT CROSSING  
 SHEET TITLE: PRELIMINARY PLAT  
 "NOT FOR FINAL RECORDING"

DESIGNER: DJS  
 PROJECT ENGINEER: DJS  
 QUALITY CONTROL: R/W  
 PROJECT NUMBER: 16-0635

ROBERT J. WALPOLE

FL PE No. 58206  
 SHEET NO. 16-3

NOT FOR FINAL RECORDING