

AFFIDAVIT FOR POSTED LAND USE SIGN

I Justin Taber, POSTED THE LAND USE
(name)
SIGN ON 7-10-17 FOR THE Ordinance 17-08 (M3 Alachua, LLC) LSCPA - CCOM2
(date) (state type of action and project name)
LAND USE ACTION.

AS PER ARTICLE 2.2.9 D OF THE LAND DEVELOPMENT REGULATIONS.

THIS WILL BE INCLUDED IN THE STAFF REPORT.


(signature)

4
(number of signs)

IMPORTANT INFORMATION REGARDING POSTED NOTICE SIGNS

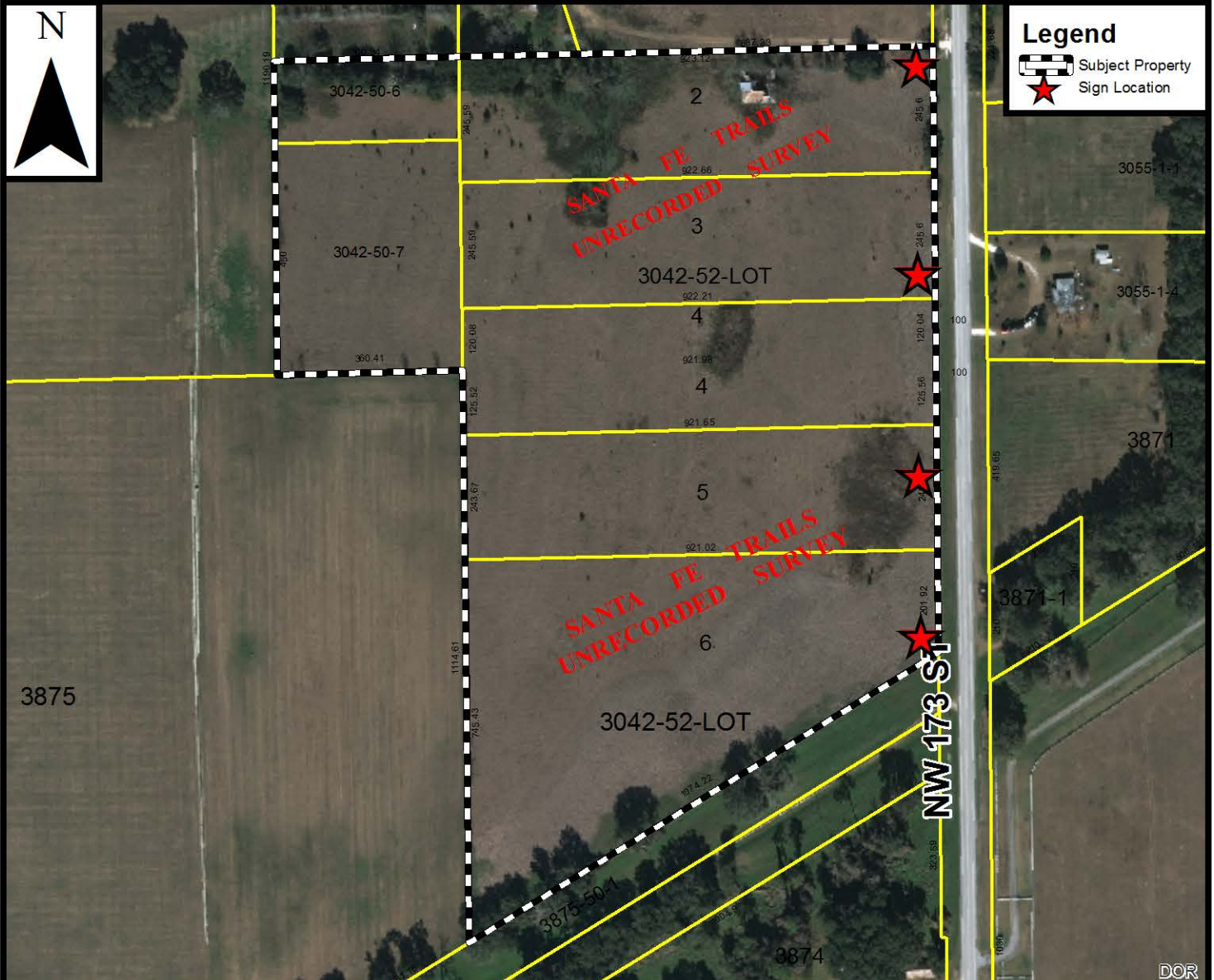
Pursuant to Section 2.2.9(D) of the City's Land Development Regulations, posted notice signs must be placed on the land that is the subject of the application, along each street which is adjacent to or runs through the land in a manner that makes them clearly visible. Signs shall be posted at intervals of not more than 400 feet when the land subject to the application has less than 1,500 feet of road frontage. When the land subject to the application has 1,500 feet or more of road frontage, signs shall be posted at intervals of not more than 1,320 feet.

Signs shall be inspected by the City subsequent to their posting. The applicant shall be responsible for ensuring that the posted notice is maintained on the land subject to the application until the completion of the final public hearing on the application.

Signs must be removed by the applicant and returned to the City within ten days after the final decision on the application.



Alachua West Large Scale Comprehensive Plan Amendment (LSCPA) Site-Specific Amendment to the Official Zoning Atlas (Rezoning)



CHARGES

Continued from B1

threatened. She again called 911 and fled the apartment. Sperring told police the woman's account was not accurate but did not comment further. He was held in the Alachua County jail. ASO spokesman Art Forgey said Sperring was placed on administrative leave during the criminal investigation and an internal investigation. "We take these things seriously," Forgey said. "We have a high expectation for our employees." Forgey said the agency would "cooperate fully" with GPD. Sperring was hired by the Sheriff's Office in September 2014. In December 2016, Sperring was arrested on suspicion of driving under the influence and leaving the scene of an accident. The case was dropped in March due to insufficient evidence. In an emailed statement, GPD spokesman Officer Ben Tobias wrote: "The officers of the Gainesville Police Department are tasked with the enforcement of laws. A suspect's occupation does not affect the outcome of a criminal investigation, as evidenced by this arrest. As in any domestic violence case, the victim in this case does have access to victim advocates and we hope that she uses those services."

Florida citrus harvest lowest in decades

By Jim Turner
TheNews Service of Florida

TALLAHASSEE — The final forecast of the 2016-17 season for Florida's struggling citrus industry shows the orange crop falling 16 percent from the previous season, which had already been at a five-decades low. After a season of severe drought, combined with the continued fight against a deadly citrus disease and the expansion of residential development, the news wasn't any better for grapefruit farming, where production dropped 28 percent from the prior year. Agriculture Commissioner and gubernatorial candidate Adam Putnam, who grew up on a farm in Polk County, expressed a need to keep fighting the citrus greening disease, which he equated to being "like a biblical plague" spreading across the state's groves.

"The future of Florida citrus, and the tens of thousands of jobs it supports, is wholly dependent on the discovery of a silver bullet in the fight against greening," Putnam said in a prepared statement. "Florida's brightest minds are making progress toward a solution, but until then, we must continue to support our growers and provide them every tool available to combat this devastating disease." The U.S. Department of Agriculture reported Wednesday, in the final forecast for the 2016-17 season, that Florida growers have harvested enough oranges to fill 68.7 million 90-pound boxes. The figure is up slightly from a June forecast, but down from the 70 million boxes growers originally hoped to fill this season. The monthly uptick was the focus of the Florida Department of Citrus. "Ending the season on

a positive note is a big deal because it shows there is still investment in Florida's signature crop," Shannon Shepp, executive director of the Department of Citrus, said in a prepared statement. "It takes quite serious effort to produce every single piece of fruit. Every additional box shows promise for Florida citrus." Growers produced 81.6 million boxes of oranges in the 2015-2016 season. Meanwhile, growers during the 2016-2017 season filled 7.8 million 90-pound boxes with grapefruit, the red variety accounting for 6.3 million boxes. While unchanged from the June forecast, grapefruit production a year ago stood at 10.8 million boxes, and this year's harvest was initially forecast to reach 9.6 million boxes. A relative bright spot for citrus growers this year was the production of tangerines and tangelos.

The specialty crop, which hit a low of 1.415 million boxes last season, filled 1.62 million boxes this past season. The forecast at the start of the season was for tangerines and tangelos to fill 1.65 million boxes. A decade ago, Florida growers produced 151 million boxes of oranges, 19.3 million boxes of grapefruit and 6.9 million boxes with tangerines and tangelos. At that time, Florida accounted for almost three-fourths of all U.S. orange production. California was second filling 53 million boxes, or 25.7 percent. Florida now accounts for 58 percent of the U.S. orange production. California remains second with 48 million boxes filled this year, or 40.65 percent of the total. To brace for the continuing declines, the Florida Department of Citrus has approved a preliminary \$17.5 million

operating budget that would feature a 22 percent spending cut. The proposed budget, based on growers producing another 10 percent less next season, won't be finalized until October when the first 2017-2018 forecast is available. To help growers, the department is proposing that a tax on each box filled with grapefruit would drop from 7 cents to 5 cents. A year ago, the tax was lowered from 23 cents to 7 cents on each box of processed oranges and from 19 cents for each box of grapefruit. The spending reductions during the 2017-2018 fiscal year would come mostly by eliminating retail-marketing efforts, which stood at \$1.5 million in the current year, a \$1.43 million cut to public relations and a nearly \$1 million decrease to the fresh and gift fruit program.

SCHOOLS

Continued from B1

Developmental Research School and worked at Eastside High School. The new appointments are in addition to four other principal changes.

In June, Heather Harbour was appointed principal at Alachua Elementary. Justin Russell was appointed principal at Littlewood Elementary, and Ashlea Zeller was promoted to principal at Terwilliger Elementary School. This month, Libby Hartwell stepped down

as principal of Hawthorne Middle/High School. A replacement has not been selected. Also in June, Donna Jones, who has been with the district for 34 years, was appointed to replace Clarke as deputy superintendent. Jennifer Wise, one of two executive directors of the former school supervision department, was appointed executive director of curriculum and school improvement, Jones' former title. Catherine Barnes, the other executive director, was named principal of Duval Early Learning Center.




Apoké Sushi plans to open an upstairs Midtown location at 1404 W. University Ave. this fall. Customers will choose a salad, bowl or burrito, a base of rice, quinoa or greens, then a sushi-grade, sustainable fish. [PHOTO SUBMITTED BY APOKE SUSHI]

ROUNDUP

Continued from B1

sandwiches and subs to make it a quicker express version," Anders said. "We're just going to serve breakfast and lunch, including bagels and coffee." He said the location will have pre-made sandwiches for pickup. One reason Anders chose the Park Lane location was because no one in that part of town serves coffee in the mornings. "I'm going to fill that gap," he said. The new Dave's is planning to open Aug. 1. Anders

said it's on track as long as all the permitting goes through. Yummy House will open bakery Yummy House, the sit-down Chinese and Dim Sum restaurant, is opening an Asian fusion bakery. Sweet Buns Bakery will go in next to the Yummy House's Archer Road location in the space vacated by Momoyaki, 3102 SW 34th St. Starting sometime in mid-August, Sweet Buns will serve treats including spring onion buns, egg tarts, barbecue pork buns as well as Asian-style cakes and coffee.



IMPLANT DENTISTRY

If you wear a full or partial denture, you should consider dental implants to improve your ability to chew properly for your health.

Over 25 years of experience placing & restoring implants.

William K. Van Dyke D.M.D.
(352) 377-1781

PUBLIC NOTICE OF ENACTMENT OF AN ORDINANCE OF THE CITY OF ALACHUA, FLORIDA

Notice is hereby given that the City Commission of the City of Alachua will hold a public hearing on a proposed ordinance. The hearing will be held on July 24, 2017, at 6:00 p.m., in the James A. Lewis Commission Chambers in City Hall, located at 15100 NW 142nd Terrace, Alachua, Florida.

The ordinance title is as follows:

ORDINANCE 17-10

AN ORDINANCE OF THE CITY OF ALACHUA, FLORIDA, RELATING TO THE AMENDMENT OF THE OFFICIAL ZONING ATLAS; AMENDING THE OFFICIAL ZONING ATLAS FROM RESIDENTIAL MULTIPLE FAMILY – 8 (“RMF-8”) TO PLANNED DEVELOPMENT – RESIDENTIAL (“PD-R”) ON APPROXIMATELY 35.82 ACRES; LOCATED WEST OF NW 173RD STREET (ALSO KNOWN AS COUNTY ROAD 235A), APPROXIMATELY 1,000 FEET SOUTH OF THE INTERSECTION OF NW US HIGHWAY 441 AND NW 173RD STREET; TAX PARCEL NUMBERS 03042-050-006, 03042-050-007, 03042-052-002, 03042-052-003, 03042-052-004, 03042-052-005, AND 03042-052-006; REPEALING ALL ORDINANCES IN CONFLICT; PROVIDING SEVERABILITY; AND PROVIDING AN EFFECTIVE DATE.



At the public hearing, all interested parties may appear and be heard with respect to the application. Copies of the application are available for public inspection at the Planning and Community Development Department, 15100 NW 142nd Terrace, Alachua, Florida, on any regular business day between the hours of 7:30 a.m. to 6:00 p.m. Written comments on the application may be sent to the following address: City of Alachua, Planning and Community Development, P.O. Box 9, Alachua, FL 32616. Notice is given pursuant to Section 286.0105, Florida Statutes, that, in order to appeal any decision made at the public hearing, you will need a record of the proceedings, and that, for such purpose, you may need to ensure that a verbatim record of the proceedings is made, which includes the testimony and evidence upon which the appeal is to be based. In accordance with the Americans with Disabilities Act, any persons with a disability requiring reasonable accommodation in order to participate in this meeting should call the City Clerk at (386) 418-6100 x 101 at least 48 hours prior to the public hearing.

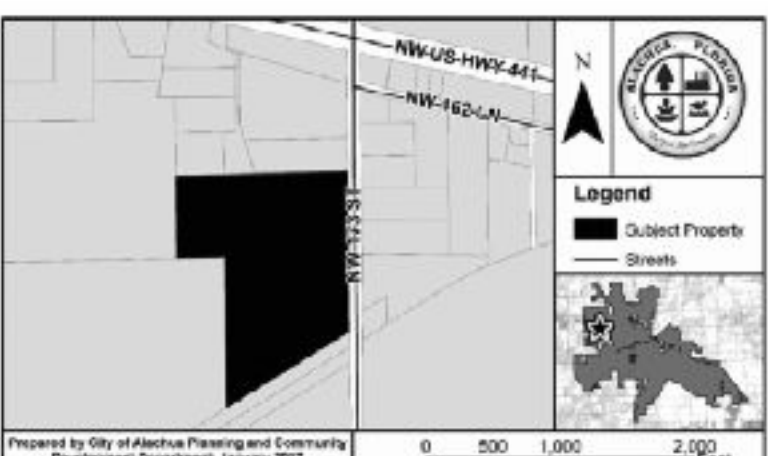
PUBLIC NOTICE OF ENACTMENT OF AN ORDINANCE OF THE CITY OF ALACHUA, FLORIDA

Notice is hereby given that the City Commission of the City of Alachua will hold a public hearing on a proposed ordinance. The hearing will be held on July 24, 2017, at 6:00 p.m., in the James A. Lewis Commission Chambers in City Hall, located at 15100 NW 142nd Terrace, Alachua, Florida.

The ordinance title is as follows:

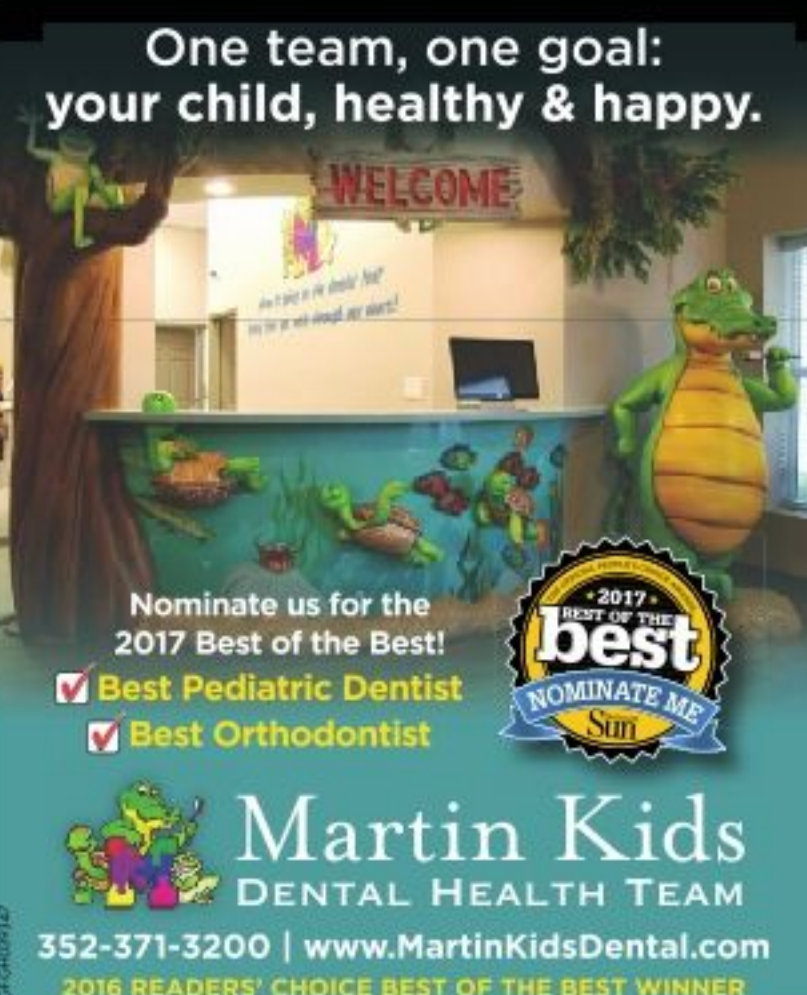
ORDINANCE 17-08

AN ORDINANCE OF THE CITY OF ALACHUA, FLORIDA, RELATING TO THE LARGE SCALE AMENDMENT OF THE CITY OF ALACHUA COMPREHENSIVE PLAN FUTURE LAND USE MAP; AMENDING THE FUTURE LAND USE MAP CLASSIFICATION FROM MEDIUM DENSITY RESIDENTIAL TO MODERATE DENSITY RESIDENTIAL ON APPROXIMATELY 35.82 ACRES; LOCATED WEST OF NW 173RD STREET (ALSO KNOWN AS COUNTY ROAD 235A), APPROXIMATELY 1,000 FEET SOUTH OF THE INTERSECTION OF NW US HIGHWAY 441 AND NW 173RD STREET; TAX PARCEL NUMBERS 03042-050-006, 03042-050-007, 03042-052-002, 03042-052-003, 03042-052-004, 03042-052-005, AND 03042-052-006; REPEALING ALL ORDINANCES IN CONFLICT; PROVIDING SEVERABILITY; AND PROVIDING AN EFFECTIVE DATE.



At the public hearing, all interested parties may appear and be heard with respect to the application. Copies of the application are available for public inspection at the Planning and Community Development Department, 15100 NW 142nd Terrace, Alachua, Florida, on any regular business day between the hours of 7:30 a.m. to 6:00 p.m. Written comments on the application may be sent to the following address: City of Alachua, Planning and Community Development, P.O. Box 9, Alachua, FL 32616. Notice is given pursuant to Section 286.0105, Florida Statutes, that, in order to appeal any decision made at the public hearing, you will need a record of the proceedings, and that, for such purpose, you may need to ensure that a verbatim record of the proceedings is made, which includes the testimony and evidence upon which the appeal is to be based. In accordance with the Americans with Disabilities Act, any persons with a disability requiring reasonable accommodation in order to participate in this meeting should call the City Clerk at (386) 418-6100 x 101 at least 48 hours prior to the public hearing.

One team, one goal:
your child, healthy & happy.



Nominate us for the 2017 Best of the Best!

✓ Best Pediatric Dentist
✓ Best Orthodontist

Martin Kids
DENTAL HEALTH TEAM

352-371-3200 | www.MartinKidsDental.com

2016 READERS' CHOICE BEST OF THE BEST WINNER



TIOGA
DENTAL
& ORTHODONTICS

NEW PATIENTS WELCOME!

COMPREHENSIVE.
COMPASSIONATE.
SUPERIOR CARE.

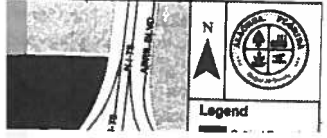
www.TiogaDental.com | 13008 SW 1st Road, Ste 233 • Gainesville, FL 32609 | (352) 397-2952

ty of fire levy without re-noticing
 ed all affected property
 accordance owners, at \$225 per
 law the dwelling for Residential,
 ist adopt \$0.19 per square foot for
 posed rate Commercial, \$0.04 per
 sment for square foot for Industrial/
 e (TRIM) Warehouse and \$0.26 for
 ch will be Institutional. It appears
 ty owners the most recent resolution
 untly Tax proposing increases has
 st. taken those prior caps into
 mmission consideration.
 direction Mayor Jordan Marlowe
 to raise requested a change to
 rates for the Land Development
 3 for the Regulations (LDRs) to
 payment amend the composition of
 expansion the Planning and Zoning
 f the fire Board (P&Z) to five
 Lee, this appointed resident members
 nce will and changing the *ex officio*
 ximately position of the Mayor to,
 the rate "Ex Officio, Non-Voting."
 prepare this item at the April 24
 the budget, commission meeting and
 to effect requested amendments to
 ential the composition of the P&Z
 30.15 per Board and the voting status
 industrial/ of the *ex officio* mayoral
 voting. He also requested

City of ALACHUA

CE OF PUBLIC RING BEFORE OF THE CITY OF HUA, FLORIDA

en that the City Commission of the City of
 ublic hearing on July 24, 2017, at 6:00 p.m.
 held in the James A. Lewis Commission
 all, located at 15100 NW 142nd Terrace,
 onsider the following: A request by Robert
 AP, of Causseaux, Hewett, & Walpole, Inc.,
 for Alachua A One, LLC, property owner,
 he preliminary plat of HighPoint Crossing,
 onstruction of utility infrastructure, master
 ter, and roadway improvements to serve
 a ±30.57 acre subject property, consisting
 object area, located northwest of the US
 ate 75 interchange, north of US Highway
 the Heritage Oaks subdivision; A portion
 r 03049-000-000 and Tax Parcel Number
 M: Commercial; Zoning: Commercial
 y District: Gateway Overlay District.



"The City of Newberry
 Planning & Zoning
 Board reviewed the draft
 ordinance, Ordinance 2017-
 12, at the June 5 meeting
 and voted unanimously to
 recommend approval of the
 proposed ordinance.
 A Legislative Public
 Hearing and Second
 Reading of the ordinance
 was conducted at Monday's
 meeting, and the ordinance
 was approved.
 Later in the meeting,
 a resolution appointing
 a Planning and Zoning
 Board member resulted in

Public Hearing and Second
 Reading of an ordinance
 amending the Code of
 Ordinances to abolish the
 Public Works Advisory
 Board was approved. "This
 Board has not been needed
 or active for years," said
 Mike New, City Manager.
 This ordinance also passed
 with no objection.
 The reappointment
 of Commissioner Rick
 Coleman to the North
 Central Florida Regional
 Planning Council as a voting
 representative was also
 approved. "Commissioner

Introductory Visa® rate
4.99% APR*

Consolidate your high rate store
 credit cards to a low rate SunState
 Visa Credit Card today.
 Low fixed rates
 No annual fee.



Membership is open to everyone who lives,
 works, worships or attends school in Alachua,
 Columbia, Dixie, Gilchrist or Levy County.

www.SunStateFCU.org
 14520 NW US Hwy 441 - Alachua - (386) 462-3900
 14133 W Newberry Rd - Jonessville - (352) 332-3090

*With approved credit, new cards only. Rates valid as of
 February 26, 2015. After the initial 6 months your rates will go
 to the regular rate of 9.49%, 10.99%, or 13.99%. Annual
 Percentage Rate (APR) for SunState Platinum Visa: 10.99%,
 12.40%, 15.40% APR for SunState Platinum Visa with
 Rewards, based on your credit worthiness. May not be used
 to pay any SunState FCU loan or Visa. Excludes pledged
 Visa. Visa is a registered trademark of Visa International.

Federally insured by NCUA



City of ALACHUA

PUBLIC NOTICE OF ENACTMENT OF AN ORDINANCE OF THE CITY OF ALACHUA, FLORIDA

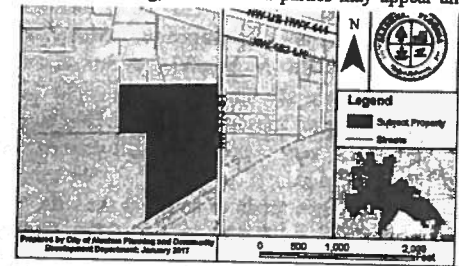
Notice is hereby given that the City Commission of the City of
 Alachua will hold a public hearing on a proposed ordinance. The
 hearing will be held on July 24, 2017, at 6:00 p.m., in the James
 A. Lewis Commission Chambers in City Hall, located at 15100
 NW 142nd Terrace, Alachua, Florida.

The ordinance title is as follows:

ORDINANCE 17-08

AN ORDINANCE OF THE CITY OF ALACHUA, FLORIDA,
 RELATING TO THE LARGE SCALE AMENDMENT OF
 THE CITY OF ALACHUA COMPREHENSIVE PLAN
 FUTURE LAND USE MAP; AMENDING THE FUTURE
 LAND USE MAP CLASSIFICATION FROM MEDIUM
 DENSITY RESIDENTIAL TO MODERATE DENSITY
 RESIDENTIAL ON APPROXIMATELY 35.82 ACRES;
 LOCATED WEST OF NW 173RD STREET (ALSO
 KNOWN AS COUNTY ROAD 235A), APPROXIMATELY
 1,000 FEET SOUTH OF THE INTERSECTION OF NW US
 HIGHWAY 441 AND NW 173RD STREET; TAX PARCEL
 NUMBERS 03042-050-006, 03042-050-007, 03042-052-002,
 03042-052-003, 03042-052-004, 03042-052-005, AND 03042-
 052-006; REPEALING ALL ORDINANCES IN CONFLICT;
 PROVIDING SEVERABILITY; AND PROVIDING AN
 EFFECTIVE DATE.

At the public hearing, all interested parties may appear and be



heard with respect to the application. Copies of the application are
 available for public inspection at the Planning and Community
 Development Department, 15100 NW 142nd Terrace, Alachua,
 Florida, on any regular business day between the hours of 7:30
 a.m. to 6:00 p.m. Written comments on the application may be
 sent to the following address: City of Alachua, Planning and
 Community Development, P.O. Box 9, Alachua, FL 32616.
 Notice is given pursuant to Section 286.0105, Florida Statutes,
 that, in order to appeal any decision made at the public hearing,
 you will need a record of the proceedings, and that, for such
 purpose, you may need to ensure that a verbatim record of the
 proceedings is made, which includes the testimony and evidence
 upon which the appeal is to be based. In accordance with the
 Americans with Disabilities Act, any persons with a disability
 requiring reasonable accommodation in order to participate in
 this meeting should call the City Clerk at (386) 418-6100 x 101 at
 least 48 hours prior to the public hearing.

(Published: Alachua County Today - July 13, 2017)

Florida Retirement (FDR) or DR...



City of
ALACHUA

THE GOOD LIFE COMMUNITY

Mailed 7/10/2017
AMF

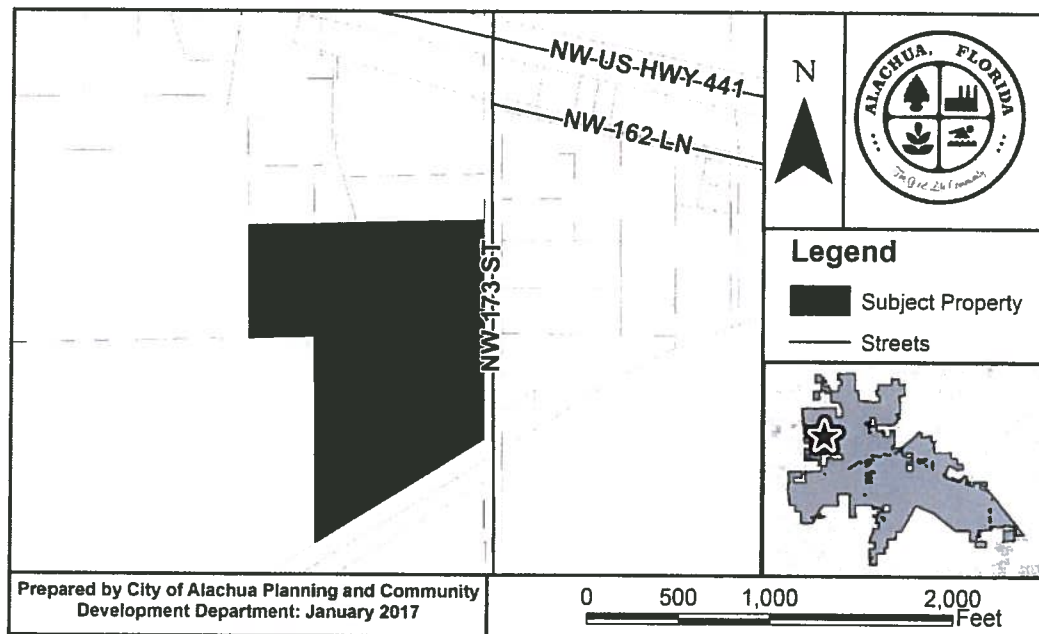
PUBLIC NOTICE OF ENACTMENT OF AN ORDINANCE OF THE CITY OF ALACHUA, FLORIDA

Notice is hereby given that the City Commission of the City of Alachua will hold a public hearing on a proposed ordinance. The hearing will be held on July 24, 2017, at 6:00 p.m., in the James A. Lewis Commission Chambers in City Hall, located at 15100 NW 142nd Terrace, Alachua, Florida.

The ordinance title is as follows:

ORDINANCE 17-08

AN ORDINANCE OF THE CITY OF ALACHUA, FLORIDA, RELATING TO THE LARGE SCALE AMENDMENT OF THE CITY OF ALACHUA COMPREHENSIVE PLAN FUTURE LAND USE MAP; AMENDING THE FUTURE LAND USE MAP CLASSIFICATION FROM MEDIUM DENSITY RESIDENTIAL TO MODERATE DENSITY RESIDENTIAL ON APPROXIMATELY 35.82 ACRES; LOCATED WEST OF NW 173RD STREET (ALSO KNOWN AS COUNTY ROAD 235A), APPROXIMATELY 1,000 FEET SOUTH OF THE INTERSECTION OF NW US HIGHWAY 441 AND NW 173RD STREET; TAX PARCEL NUMBERS 03042-050-006, 03042-050-007, 03042-052-002, 03042-052-003, 03042-052-004, 03042-052-005, AND 03042-052-006; REPEALING ALL ORDINANCES IN CONFLICT; PROVIDING SEVERABILITY; AND PROVIDING AN EFFECTIVE DATE.



At the public hearing, all interested parties may appear and be heard with respect to the application. Copies of the application are available for public inspection at the Planning and Community Development Department, 15100 NW 142nd Terrace, Alachua, Florida, on any regular business day between the hours of 7:30 a.m. to 6:00 p.m. Written comments on the application may be sent to the following address: City of Alachua, Planning and Community Development, P.O. Box 9, Alachua, FL 32616. Notice is given pursuant to Section 286.0105, Florida Statutes, that, in order to appeal any decision made at the public hearing, you will need a record of the proceedings, and that, for such purpose, you may need to ensure that a verbatim record of the proceedings is made, which includes the testimony and evidence upon which the appeal is to be based. In accordance with the Americans with Disabilities Act, any persons with a disability requiring reasonable accommodation in order to participate in this meeting should call the City Clerk at (386) 418-6100 x 101 at least 48 hours prior to the public hearing.

P.O. Box 9 ♦ Alachua, Florida 32616-0009
Phone: (386) 418-6121 ♦ Fax: (386) 418-6130



City of
ALACHUA

THE GOOD LIFE COMMUNITY

Mailed 7/10/2017
duf

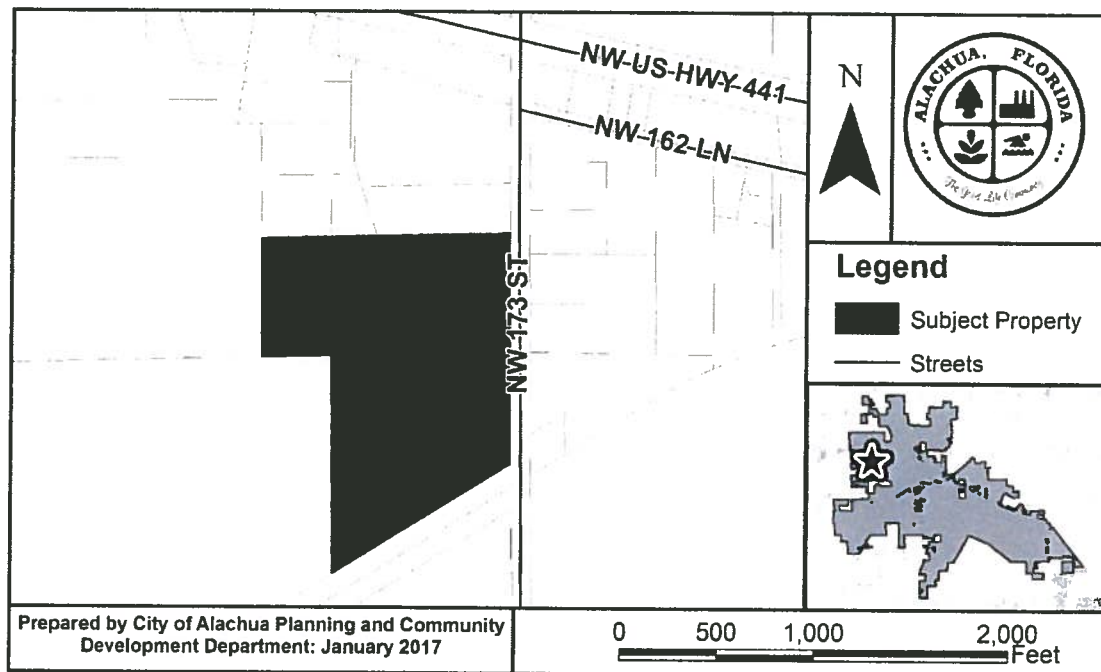
PUBLIC NOTICE OF ENACTMENT OF AN ORDINANCE OF THE CITY OF ALACHUA, FLORIDA

Notice is hereby given that the City Commission of the City of Alachua will hold a public hearing on a proposed ordinance. The hearing will be held on July 24, 2017, at 6:00 p.m., in the James A. Lewis Commission Chambers in City Hall, located at 15100 NW 142nd Terrace, Alachua, Florida.

The ordinance title is as follows:

ORDINANCE 17-10

AN ORDINANCE OF THE CITY OF ALACHUA, FLORIDA, RELATING TO THE AMENDMENT OF THE OFFICIAL ZONING ATLAS; AMENDING THE OFFICIAL ZONING ATLAS FROM RESIDENTIAL MULTIPLE FAMILY - 8 ("RMF-8") TO PLANNED DEVELOPMENT - RESIDENTIAL ("PD-R") ON APPROXIMATELY 35.82 ACRES; LOCATED WEST OF NW 173RD STREET (ALSO KNOWN AS COUNTY ROAD 235A), APPROXIMATELY 1,000 FEET SOUTH OF THE INTERSECTION OF NW US HIGHWAY 441 AND NW 173RD STREET; TAX PARCEL NUMBERS 03042-050-006, 03042-050-007, 03042-052-002, 03042-052-003, 03042-052-004, 03042-052-005, AND 03042-052-006; REPEALING ALL ORDINANCES IN CONFLICT; PROVIDING SEVERABILITY; AND PROVIDING AN EFFECTIVE DATE.



At the public hearing, all interested parties may appear and be heard with respect to the application. Copies of the application are available for public inspection at the Planning and Community Development Department, 15100 NW 142nd Terrace, Alachua, Florida, on any regular business day between the hours of 7:30 a.m. to 6:00 p.m. Written comments on the application may be sent to the following address: City of Alachua, Planning and Community Development, P.O. Box 9, Alachua, FL 32616. Notice is given pursuant to Section 286.0105, Florida Statutes, that, in order to appeal any decision made at the public hearing, you will need a record of the proceedings, and that, for such purpose, you may need to ensure that a verbatim record of the proceedings is made, which includes the testimony and evidence upon which the appeal is to be based. In accordance with the Americans with Disabilities Act, any persons with a disability requiring reasonable accommodation in order to participate in this meeting should call the City Clerk at (386) 418-6100 x 101 at least 48 hours prior to the public hearing.

P.O. Box 9 ♦ Alachua, Florida 32616-0009
Phone: (386) 418-6121 ♦ Fax: (386) 418-6130

WAITCUS, GREGORY MICHAEL
7453 SW 116TH TER
GAINESVILLE, FL 32608-4234

TOMOKA HILLS FARMS INC
1301 DIXIANA DOMINO RD
LEXINGTON, KY 40511

ACKLEY ROBERT L & MARY J
15817 NW 173RD ST
ALACHUA, FL 32615-5231

SMYDER, CHARLES & REGINA
PO BOX 842
ALACHUA, FL 32616-0842

RL REGI FLORIDA LLC
700 NW 107TH AVE STE 200
MIAMI, FL 33172

RL REGI FLORIDA LLC
700 NW 107TH AVE STE 200
MIAMI, FL 33172

PATEL & PATEL
6036 NW 112TH PL
ALACHUA, FL 32615-7423

WAITCUS, JOHN J TRUSTEE
7453 SW 116TH TER
GAINESVILLE, FL 32608-4234

WAITCUS, HENRIETTA TRUSTEE
7453 SW 116TH TER
GAINESVILLE, FL 32608-4234

RL REGI FLORIDA LLC
700 NW 107TH AVE STE 200
MIAMI, FL 33172

RL REGI FLORIDA LLC
700 NW 107TH AVE STE 200
MIAMI, FL 33172

RL REGI FLORIDA LLC
700 NW 107TH AVE STE 200
MIAMI, FL 33172

RL REGI FLORIDA LLC
700 NW 107TH AVE STE 200
MIAMI, FL 33172

RL REGI FLORIDA LLC
700 NW 107TH AVE STE 200
MIAMI, FL 33172

PATEL & PATEL
6036 NW 112TH PL
ALACHUA, FL 32615-7423

SINGH, LAKHVIR
PO BOX 2092
ALACHUA, FL 32616

TOMOKA HILLS FARMS INC
1301 DIXIANA DOMINO RD
LEXINGTON, KY 40511

TOMOKA HILLS FARMS INC
1301 DIXIANA DOMINO RD
LEXINGTON, KY 40511

THOMAS & THOMAS & THOMAS HEIRS
PO BOX 44
HIGH SPRINGS, FL 32655-0044

TOMOKA HILLS FARMS INC
1301 DIXIANA DOMINO RD
LEXINGTON, KY 40511

VICKORY WILLIAM A & SUSAN S
15404 NW 173RD ST
ALACHUA, FL 32615

VICKORY W H & FAYE
15310 NW 173RD ST
ALACHUA, FL 32615-5222

TOMOKA HILLS FARMS INC
1301 DIXIANA DOMINO RD
LEXINGTON, KY 40511

SMYDER, CHARLES & REGINA
PO BOX 842
ALACHUA, FL 32616-0842

ALACHUA COUNTY
12 SE 1ST ST
GAINESVILLE, FL 32601

ALACHUA COUNTY
12 SE 1ST ST
GAINESVILLE, FL 32601

Antoinette Endelicato
5562 NW 93rd Avenue
Gainesville, FL 32653

Dan Rhine
288 Turkey Creek
Alachua, FL 32615

Tom Gorman
9210 NW 59th Street
Alachua, FL 32653

Richard Gorman
5716 NW 93rd Avenue
Alachua, FL 32653

Peggy Arnold
410 Turkey Creek
Alachua, FL 32615

David Forest
23 Turkey Creek
Alachua, FL 32615

President
TCMOA
1000 Turkey Creek
Alachua, FL 32615

Linda Dixon, AICP
Assistant Director Planning
PO Box 115050
Gainesville, FL 32611

Craig Parenteau
FL Department of Environmental
Protection
4801 Camp Ranch Road
Gainesville, FL 32641

Jeannette Hinsdale
P.O. Box 1156
Alachua, FL 32616

Lynn Coullias
7406 NW 126th Ave
Alachua, FL 32615

Lynda Coon
7216 NW 126 Avenue
Alachua, FL 32615

Tamara Robbins
PO Box 2317
Alachua, FL 32616

Dr. Lee A. Niblock
Alachua County Manager
12 SE 1st Street
Gainesville, FL 32601