



City of ALACHUA

PUBLIC NOTICE NOTICE OF ENACTMENT OF AN ORDINANCE OF THE CITY OF ALACHUA, FLORIDA

The City of Alachua City Commission will hold a public hearing on a proposed ordinance on August 28, 2017 at 6:00 p.m. The hearing will be held in the James A. Lewis Commission Chambers of City Hall, at 15100 NW 142nd Terrace, Alachua, Florida.

The ordinance title is as follows:

ORDINANCE 17-12

AN ORDINANCE OF THE CITY OF ALACHUA, FLORIDA; AMENDING THE FOLLOWING SECTIONS OF CHAPTER 38 OF THE CITY OF ALACHUA CODE OF ORDINANCES: SECTION 38-102(a)(1) INCREASING THE WATER MONTHLY CUSTOMER CHARGE FOR EACH METERED POINT OF CONNECTION TO THE CITY WATER SYSTEM; SECTION 38-102(a)(2) INCREASING THE MONTHLY WATER AVAILABILITY CHARGE FOR EACH METERED POINT OF CONNECTION TO THE CITY'S WATER SYSTEM; SECTION 38-102(a)(3) INCREASING THE WATER CONSUMPTION CHARGES FOR RESIDENTIAL SERVICE, NONRESIDENTIAL SERVICE, AND IRRIGATION SERVICE; SECTION 38-140(a)(1) INCREASING THE WASTEWATER MONTHLY CUSTOMER CHARGE FOR EACH METERED POINT OF CONNECTION TO THE CITY WATER SYSTEM; SECTION 38-140(a)(2) INCREASING THE WASTEWATER USAGE CHARGES FOR RESIDENTIAL SERVICE AND NONRESIDENTIAL SERVICE; SECTION 38-141(a)(1) INCREASING THE RECLAIMED WATER MONTHLY CUSTOMER CHARGE FOR EACH METERED POINT OF CONNECTION TO THE CITY RECLAIMED WATER SYSTEM; SECTION 38-141(a)(2) INCREASING THE RECLAIMED WATER USAGE CHARGE; PROVIDING FOR THE REPEAL OF ALL ORDINANCES IN CONFLICT; PROVIDING FOR INCLUSION IN THE CITY CODE; AND, PROVIDING AN EFFECTIVE DATE.

At the public hearing, all interested parties may appear and be heard with respect to the proposed ordinance. Copies of the proposed ordinance and related materials are available for public inspection at the Office of the City Clerk, 15100 NW 142nd Terrace, Monday-Thursday between the hours of 7:30 a.m. to 6:00 p.m. the Thursday prior to the City Commission meeting. Written comments on the proposed ordinance may be sent to the following address: City of Alachua, Attn: Public Services Department, P.O. Box 9, Alachua, FL 32616. Notice is given pursuant to Section 286.0105, Florida Statutes, that in order to appeal any decision made at these public hearings, you will need to ensure that a verbatim record is made. In accordance with the Americans with Disabilities Act, any persons with a disability requiring reasonable accommodation in order to participate in this meeting should call the City Clerk at (386) 418-6100 x 101 at least 48 hours prior to the public hearing.

(Published: Alachua County Today - August 17, 2017)

1.25% APY*

12 Month CD

For more information visit
bbvacompass.com/savings/cd,
call 1-800-COMPASS or visit a branch.

Accounts subject to approval. \$500 minimum opening deposit required to earn the advertised Annual Percentage Yield (APY). *APY accurate as of 7/29/2017. Interest rates and APYs are subject to change at any time at the discretion of BBVA Compass. To obtain current rate information and compare rates, call 1-800-COMPASS or visit bbvacompass.com. Substantial penalty for early withdrawal. Fees could reduce earnings on accounts. Other limitations apply. BBVA Compass opens CD accounts that have no certificate, known as Time Deposits or TDs. CDs are FDIC insured up to applicable limits. BBVA Compass is a trade name of Compass Bank, a member of the BBVA Group. Compass Bank, Member FDIC Rev 07/2017 / #275579



City of ALACHUA

NOTICE OF BOARD VACANCY

The City of Alachua is currently accepting applications for two (2) appointments to be made on the following Board:

Planning and Zoning Board: The Planning and Zoning Board (PZB) consists of five voting members and a non-voting School Board representative. The PZB provides recommendations to the City Commission on various development applications, such as comprehensive plan amendments, rezonings, and subdivisions, and reviews and makes decisions on certain development applications as provided for within the City's Land Development Regulations. The PZB is also authorized by the City Commission to provide recommended policies and guiding action affecting development in the City, including amendments to Land Development Regulations, special studies, and other proposals which promote orderly development.

- Applicants must be a resident of the City of Alachua.
- Meetings are typically held at 6:00 p.m. on the second Tuesday of the month, in the James A. Lewis Commission Chambers in City Hall.

Applications may be obtained in person at City Hall, located at 15100 NW 142nd Terrace, on any regular business day (Monday through Thursday) between the hours of 7:30 a.m. and 6:00 p.m., or by visiting the City's website at www.cityofalachua.com. Completed applications must be received by the Planning and Community Development Department no later than 6:00 p.m. on **August 24, 2017**. Applications may be submitted in person at City Hall or by mail to the following address: City of Alachua, Planning and Community Development Department, P.O. Box 9, Alachua, FL 32616. Questions may be directed to the Planning and Community Development Department at (386) 418-6121.

(Published: Alachua County Today - August 10 & 17, 2017)

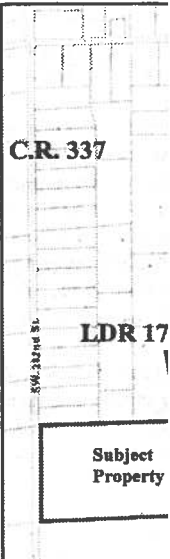
Parcel 3 - 02599-004-000 (3.36 Acres)

THE EAST FIFTY (50) FEET OF THE NORTHEAST QUARTER (NE 1/4) OF THE SE 1/4 OF THE NORTH QUARTER (N 1/4) OF THE SE 1/4, ALL BEING AND IN ALACHUA COUNTY, FLORIDA.

LESS AND EXCEPT ROAD RIGHT-OF-WAY TO EASEMENT DATED 03/24/97 RECORDED IN C.F. 11A.

Parcel 4 - 02660-000-000 (158.54 Acres)

The Northeast quarter (NE 1/4) of the North Quarter (N 1/4) and the Northeast quarter (NE 1/4) of the North Quarter (N 1/4) of the SE 1/4, all being and in Alachua County, Florida, less and except the quarter (NW 1/4) of said Section 29, for



Public hearings may be continued if an interested party shall be heard at the continuation of a public hearing and that no further notice be published, unless said continued date of the above referred

At the aforementioned public hearing, all interested parties may appear and be heard with respect to the proposed ordinance. Copies of the proposed ordinance and related materials are available for public inspection at the Office of the City Clerk, 15100 NW 142nd Terrace, Monday-Thursday between the hours of 7:30 a.m. to 6:00 p.m. the Thursday prior to the City Commission meeting. Written comments on the proposed ordinance may be sent to the following address: City of Alachua, Attn: Public Services Department, P.O. Box 9, Alachua, FL 32616. Notice is given pursuant to Section 286.0105, Florida Statutes, that in order to appeal any decision made at these public hearings, you will need to ensure that a verbatim record is made. In accordance with the Americans with Disabilities Act, any persons with a disability requiring reasonable accommodation in order to participate in this meeting should call the City Clerk at (386) 418-6100 x 101 at least 48 hours prior to the public hearing.

All persons are advised that a verbatim record of the proceeding, and to ensure that a verbatim record includes the testimony to be based.

In accordance with the Americans with Disabilities Act, any persons with a disability requiring reasonable accommodation in order to participate in this meeting should call the City Clerk at (386) 418-6100 x 101 at least 48 hours prior to the public hearing.

If you have any questions, please contact the Planning and Economic Development Department at (386) 472-5440, or if you would like to provide written comments, please send them to the Planning and Economic Development Department, P.O. Box 9, Alachua, FL 32669. Facsimiles may be sent to wendy.kinser@ci.newberry.fl.us.

(Published: Alachua County Today - August 10 & 17, 2017)

Alachua
is your best
38