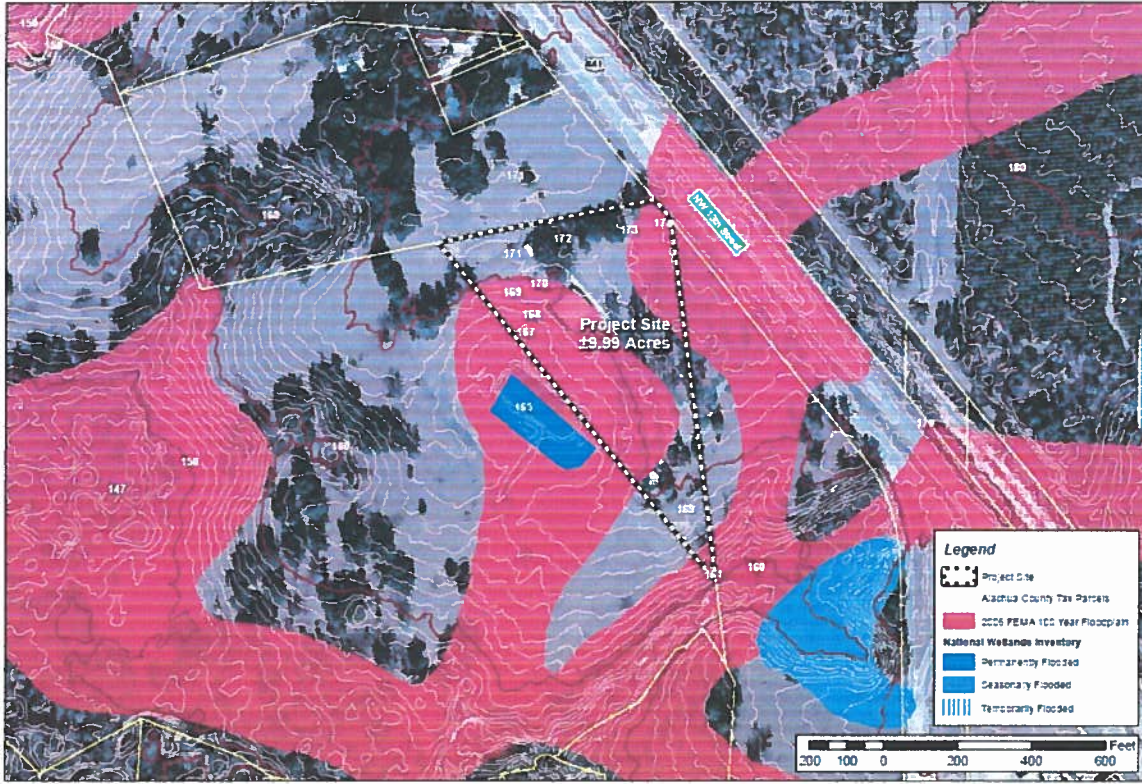


①
→Pg 12 staff report Future land use element

Community Facilities and Natural Groundwater Aquifer Recharge Element

GOAL 5: Natural Groundwater Aquifer Recharge

Objective 5.1: The City of Alachua recognizes protection of high aquifer recharge areas, wellfield protection areas, lakes, streams, drainage basins, wetlands and stream-to-sink features as vital to the protection of groundwater resources. The City shall, through partnerships and using the best available data, provide protections for groundwater resources.

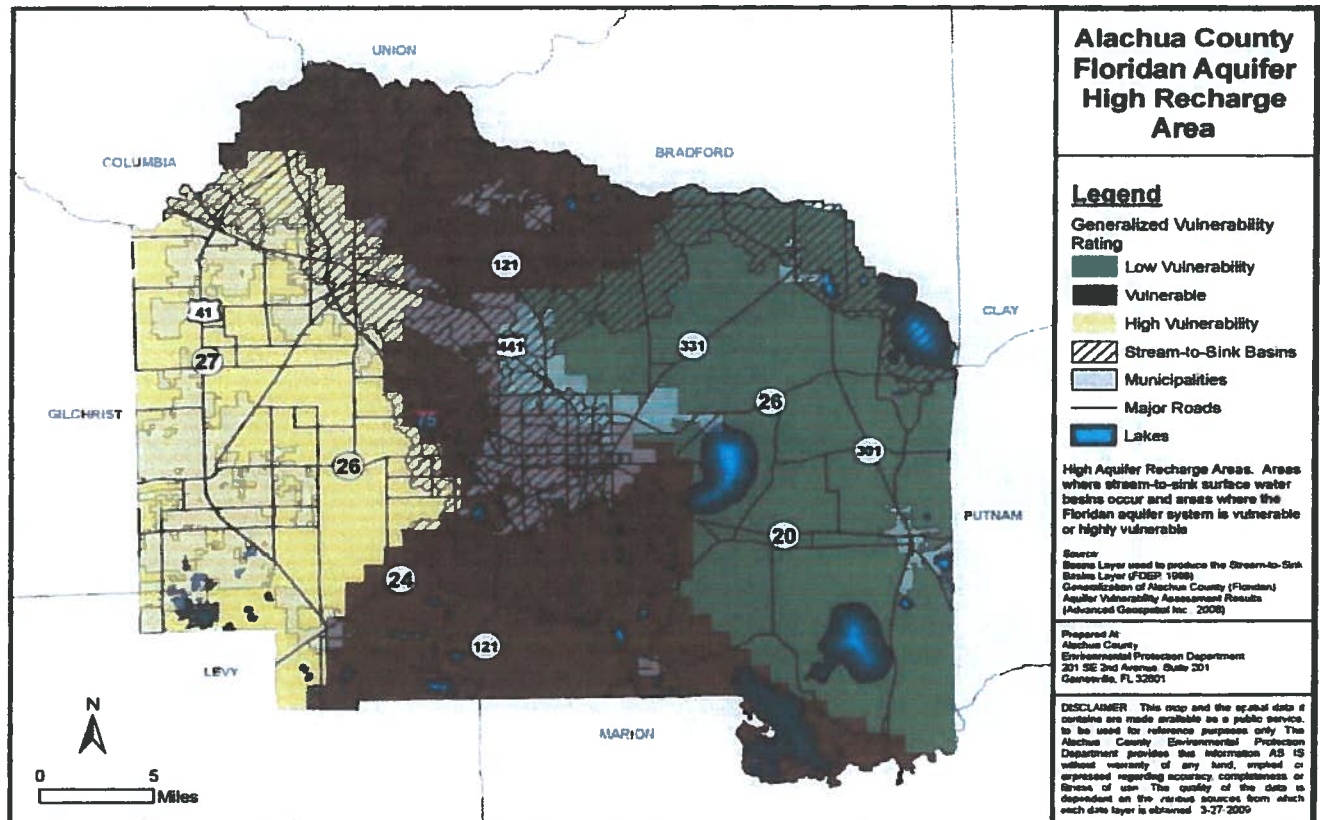


A Portion of Alachua County Tax Parcel 05936-001-000
Rezoning Application



ATTACHMENT 'B'

Conservation and Open Space Element Map Series Amendment (CPA 03-09)



List of Adopted Maps in COSE Table of Contents

1. Murphree Well Field Management Zones (part of Future Land Use Map Series)
2. ~~Degree of Confinement of the Floridan Aquifer System, Alachua County, Florida~~
Alachua County Floridan Aquifer High Recharge Area
3. USDA Soils Map (Adopted by Reference) (part of Future Land Use Map Series)
4. Strategic Ecosystems, Alachua County, Florida (part of Future Land Use Map Series)

See maps online @ <http://growth-management.alachua.fl.us/gis/gallery/compplan.php>

Alachua County Comprehensive Plan:2001-2020
Ord 02-13(4/8/02); Ord 03-05 (8/26/03); Effective 5/2/05

Conservation and Open Space 80

~~Strikethrough~~ deleted text

Underline new text