



VICTORIA HUNTER GIBNEY
CHAIR

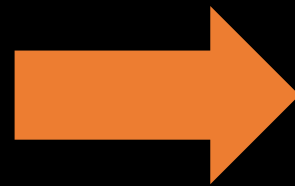
WENDY D. RESNICK
VICE-CHAIR

**LOCAL
TOBACCO
RETAIL
LICENSE**



(TRL)

**TOBACCO
RETAIL LICENSE**



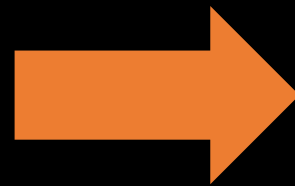
COMPONENTS

RAISE THE AGE

**SAFE ZONES
AROUND SCHOOLS**

**CLOSE THE
E-CIGARETTE
LOOPHOLE**

**TOBACCO
RETAIL LICENSE**



COMPONENTS

RAISE THE AGE

**SAFE ZONES
AROUND SCHOOLS**

**CLOSE THE
E-CIGARETTE
LOOPHOLE**

330+ Cities & Counties in **21** States

STATES
with Statewide
Tobacco 21

California
Hawaii
Maine
Massachusetts
New Jersey
Oregon



Over time...



INSTITUTE OF MEDICINE
OF THE NATIONAL ACADEMIES

25%

decline in smoking
initiation by
15-17 year olds

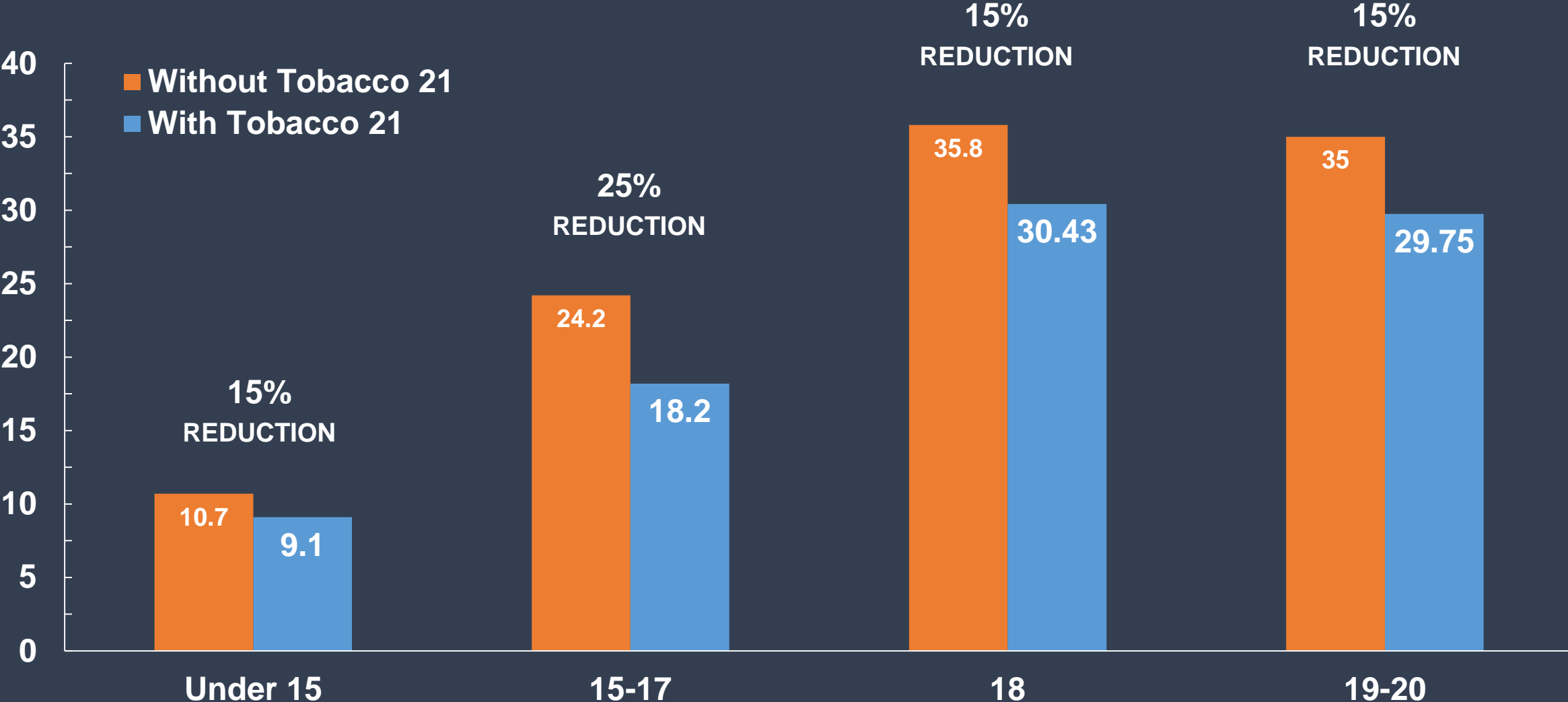
10%

overall drop in
smoking prevalence
by 2060

10%

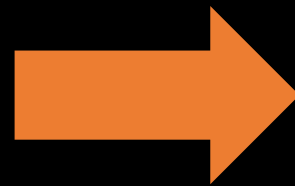
reduction of
smoking related
deaths in those
born since 2000

2010-2016 INITIATION RATES VS. PROJECTED TOBACCO 21 INITIATION RATES WITH IN ALACHUA COUNTY



Boyle, R. G., Kingsbury, J. H., & Parks, M. J. (2017). *Raising the Minimum Legal Sale Age for Tobacco to 21: The Estimated Effect for Minnesota*. Minnesota Medicine, 35-37.

**TOBACCO
RETAIL LICENSE**



COMPONENTS

RAISE THE AGE

**SAFE ZONES
AROUND SCHOOLS**

**CLOSE THE
E-CIGARETTE
LOOPHOLE**

SCHOOLS WITH MORE TOBACCO RETAILERS IN WALKING DISTANCE HAVE MORE SMOKERS

GAINESVILLE
HIGH SCHOOL

¹Henriksen et al., 2008 *Preventive Medicine*; ²Lovato et al., 2007. *Canadian Journal of Public Health*.

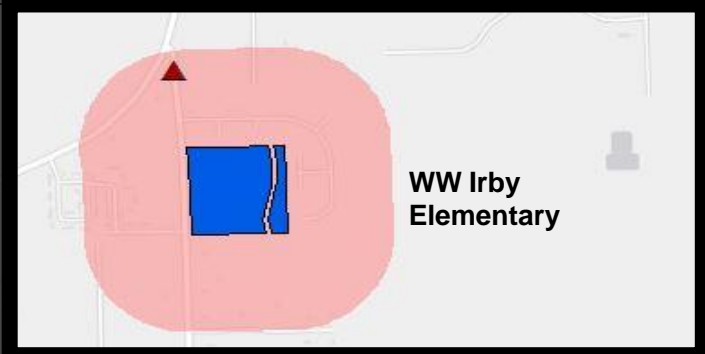
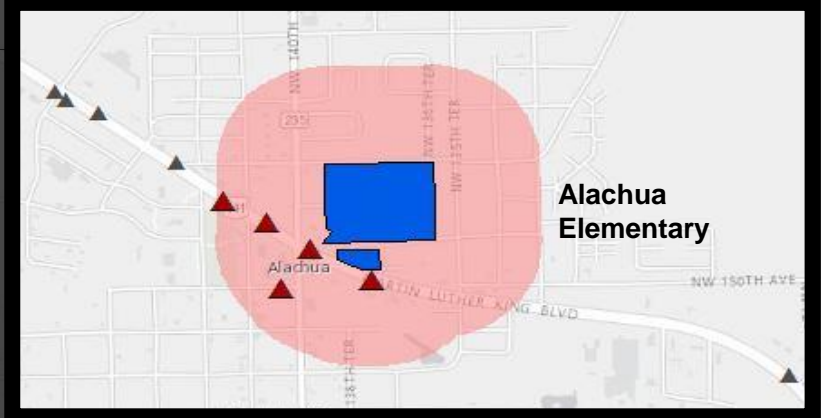
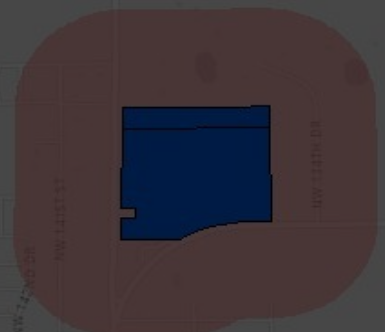
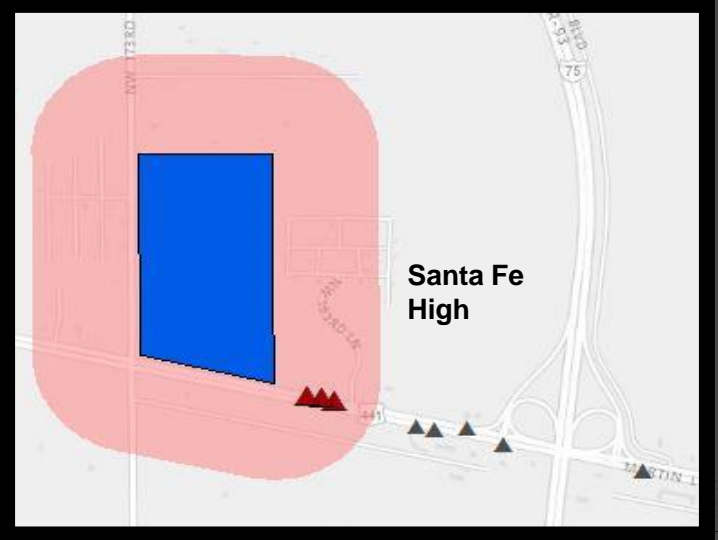


City of Alachua

Alachua County, FL

Estimated Population: 9,893

**City of Alachua
1000 Foot Buffer**

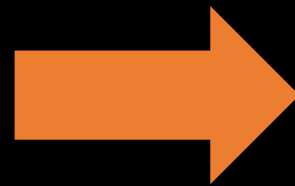


**1000 Foot Buffer
84% of all Alachua Students Impacted**

Public Schools	Licenses	Students
Alachua Elementary	5	354
Santa Fe High School	3	1,173
W.W. Irby Elementary	1	493
Total	9	2,020

	School Proximity
ALCOHOL	Florida: 500 feet (bars)
	Alachua County: None
	Municipalities (all sales): <ul style="list-style-type: none">- Alachua: 450 feet (from religious institution)- Archer: 600 feet- GNV: 400 feet- High Springs: 600 feet- Newberry: 400 feet- Waldo: 500 feet
SEXUALLY ORIENTED BUSINESSES	Florida: 2,500 feet
	Alachua County: 500 or 750 feet
	Municipalities: <ul style="list-style-type: none">- GNV: 1,000 feet- Newberry: 400 feet
TOBACCO	No restrictions

**TOBACCO
RETAIL LICENSE**



COMPONENTS

RAISE THE AGE

**SAFE ZONES
AROUND SCHOOLS**

**CLOSE THE
E-CIGARETTE
LOOPHOLE**

EPIC VAPE STORE

E-Liquids

Mods

DIY Concentrates

E-CIGARETTE LOOPHOLE

EPIC VAPE STORE
OPENING
THIS SATURDAY!

UP TO
25%
OFF
SELECTED ITEMS



EPIC VAPE STORE

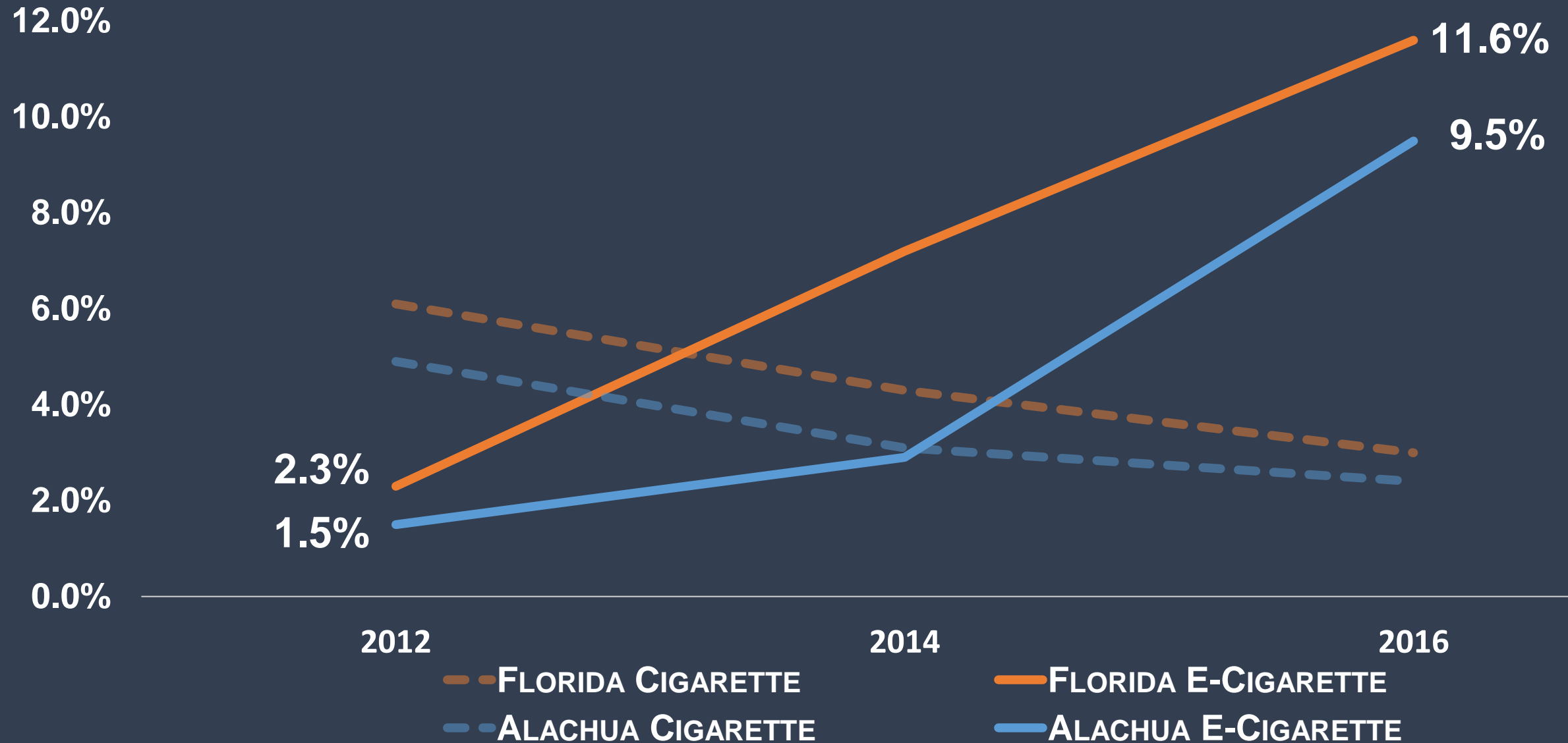
EPIC VAPE STORE
OPENING
THIS SATURDAY!

UP TO
25%
OFF
SELECTED ITEMS



EPIC VAPE STORE

FLORIDA AND ALACHUA YOUTH CIGARETTE VS. E-CIGARETTE USE



	Food and Drug Administration (FDA)	Alcoholic Beverages & Tobacco (ABT)
Compliance checks in all of Alachua County (2017)	35%	18%
Compliance checks in Alachua (2017)	2	10

TOBACCO RETAIL LICENSE PROGRESS



- **TRL will be on the BoCC agenda in late September or October**
- **Gainesville and Waldo voted to opt in if County adopts**